

For Research Use Only

PPP1CC Monoclonal antibody

Catalog Number: 68122-1-Ig



Basic Information

Catalog Number: 68122-1-Ig	GenBank Accession Number: BC014073	Purification Method: Protein A purification
Size: 150ul , Concentration: 800 ug/ml by Nanodrop;	GeneID (NCBI): 5501	CloneNo.: 2G11C3
Source: Mouse	UNIPROT ID: P36873	Recommended Dilutions: WB 1:2000-1:16000 IF/ICC 1:400-1:1600
Isotype: IgG1	Full Name: protein phosphatase 1, catalytic subunit, gamma isoform	
Immunogen Catalog Number: AG32348	Calculated MW: 35 kDa	
	Observed MW: 35kDa	

Applications

Tested Applications: WB, IF/ICC, ELISA	Positive Controls:
Species Specificity: Human, mouse, rat	WB : LNCaP cells, HeLa cells, HEK-293 cells, Jurkat cells, K-562 cells, HSC-T6 cells, NIH/3T3 cells IF/ICC : HeLa cells, C2C12 cells

Background Information

PPP1CC, also named as PP-1G, belongs to the PPP phosphatase family and PP-1 subfamily. Protein phosphatase 1 (PP1) is essential for cell division, and participates in the regulation of glycogen metabolism, muscle contractility and protein synthesis. It is involved in regulation of ionic conductances and long-term synaptic plasticity. PPP1CC may play an important role in dephosphorylating substrates such as the postsynaptic density-associated Ca²⁺/calmodulin dependent protein kinase II.

Storage

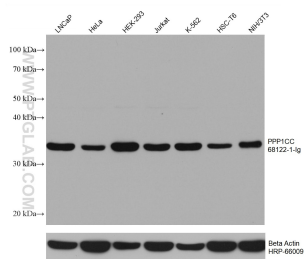
Storage:
Store at -20°C. Stable for one year after shipment.
Storage Buffer:
PBS with 0.02% sodium azide and 50% glycerol pH 7.3.
Aliquoting is unnecessary for -20°C storage

*** 20ul sizes contain 0.1% BSA

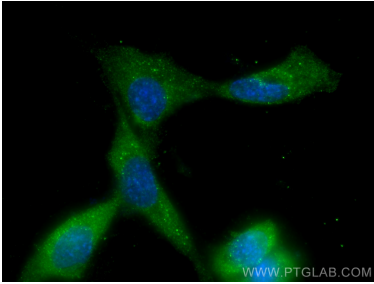
For technical support and original validation data for this product please contact:
T: 1 (888) 4PTGLAB (1-888-478-4522) (toll free in USA), or 1(312) 455-8498 (outside USA)
E: proteintech@ptglab.com
W: ptglab.com

This product is exclusively available under Proteintech Group brand and is not available to purchase from any other manufacturer.

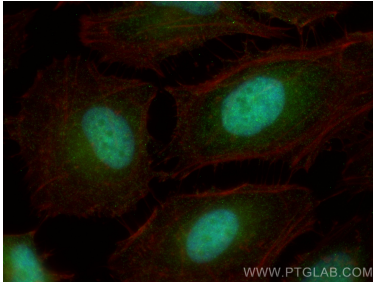
Selected Validation Data



Various lysates were subjected to SDS PAGE followed by western blot with 68122-1-Ig (PPP1CC antibody) at dilution of 1:8000 incubated at room temperature for 1.5 hours. The membrane was stripped and reblotted with HRP-conjugated Beta Actin Monoclonal antibody (HRP-66009) as loading control.



Immunofluorescent analysis of (-20°C Methanol) fixed C2C12 cells using PPP1CC antibody (68122-1-Ig, Clone: 2G11C3) at dilution of 1:800 and CoraLite®488-Conjugated Goat Anti-Mouse IgG(H+L).



Immunofluorescent analysis of (4% PFA) fixed HeLa cells using PPP1CC antibody (68122-1-Ig, Clone: 2G11C3) at dilution of 1:800 and CoraLite®488-Conjugated Goat Anti-Mouse IgG(H+L), CL594-Phalloidin (red).