

For Research Use Only

RAP1A Monoclonal antibody

Catalog Number: 68125-1-Ig **1 Publications**



Basic Information

Catalog Number: 68125-1-Ig	GenBank Accession Number: BC014086	Purification Method: Protein A purification
Size: 150ul , Concentration: 1000 ug/ml by Nanodrop;	GeneID (NCBI): 5906	CloneNo.: 1G12D8
Source: Mouse	UNIPROT ID: P62834	Recommended Dilutions: WB 1:5000-1:50000 IHC 1:250-1:1000
Isotype: IgG2a	Full Name: RAP1A, member of RAS oncogene family	
Immunogen Catalog Number: AG9463	Calculated MW: 184 aa, 21 kDa	
	Observed MW: 21 kDa	

Applications

Tested Applications: WB, IHC, ELISA	Positive Controls: WB : HEK-293 cells, LNCaP cells, HeLa cells, Jurkat cells, MOLT-4 cells, K-562 cells, Raji cells, HSC-T6 cells, NIH/3T3 cells
Cited Applications: WB	IHC : human liver cancer tissue,
Species Specificity: Human, mouse, rat	
Cited Species: mouse	
Note-IHC: suggested antigen retrieval with TE buffer pH 9.0; (*) Alternatively, antigen retrieval may be performed with citrate buffer pH 6.0	

Background Information

RAP1A(Ras-related protein Rap-1A), also known as KREV1. Induces morphological reversion of a cell line transformed by a Ras oncogene. The biological roles of RAP1A include inducing neurite outgrowth and embryonic angiogenesis(PMID: 17916086). As one member of RAS oncogene family, it is a widely expressed receptor, with high mRNA expression in many tissues, particularly abundant in the colon. In cells, RAP1A was localized in cytoplasm and cell membrane(PMID: 11359771, PMID: 11359771).

Notable Publications

Author	Pubmed ID	Journal	Application
Yurong Zhu	36999276	Autoimmunity	WB

Storage

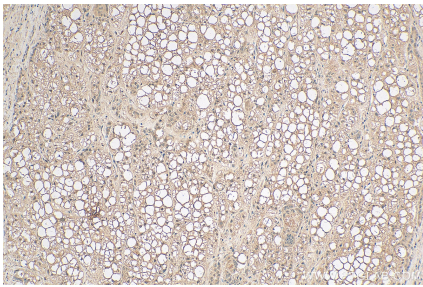
Storage:
Store at -20°C. Stable for one year after shipment.
Storage Buffer:
PBS with 0.02% sodium azide and 50% glycerol pH 7.3.
Aliquoting is unnecessary for -20°C storage

*** 20ul sizes contain 0.1% BSA

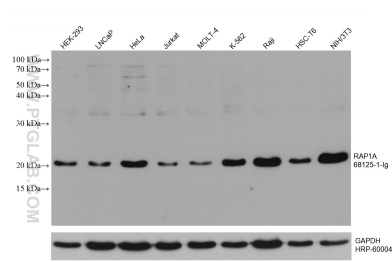
For technical support and original validation data for this product please contact:
T: 1 (888) 4PTGLAB (1-888-478-4522) (toll free in USA), or 1(312) 455-8498 (outside USA)
E: proteintech@ptglab.com
W: ptglab.com

This product is exclusively available under Proteintech Group brand and is not available to purchase from any other manufacturer.

Selected Validation Data



Immunohistochemical analysis of paraffin-embedded human liver cancer tissue slide using 68125-1-Ig (RAP1A antibody) at dilution of 1:500 (under 10x lens). Heat mediated antigen retrieval with Tris-EDTA buffer (pH 9.0).



Various lysates were subjected to SDS PAGE followed by western blot with 68125-1-Ig (RAP1A antibody) at dilution of 1:20000 incubated at room temperature for 1.5 hours. The membrane was stripped and reblotted with HRP-conjugated GAPDH Monoclonal antibody (HRP-60004) as loading control.