

For Research Use Only

# RAP1A Monoclonal antibody, PBS Only



Catalog Number: 68125-1-PBS

## Basic Information

<b>Catalog Number:</b> 68125-1-PBS	<b>GenBank Accession Number:</b> BC014086	<b>Purification Method:</b> Protein A purification
<b>Size:</b> 100ug , Concentration: 1 mg/ml by Nanodrop;	<b>GeneID (NCBI):</b> 5906	<b>CloneNo.:</b> 1G12D8
<b>Source:</b> Mouse	<b>UNIPROT ID:</b> P62834	
<b>Isotype:</b> IgG2a	<b>Full Name:</b> RAP1A, member of RAS oncogene family	
<b>Immunogen Catalog Number:</b> AG9463	<b>Calculated MW:</b> 184 aa, 21 kDa	
	<b>Observed MW:</b> 21 kDa	

## Applications

**Tested Applications:**  
WB, IHC, Indirect ELISA

**Species Specificity:**  
Human, mouse, rat

## Background Information

RAP1A(Ras-related protein Rap-1A), also known as KREV1. Induces morphological reversion of a cell line transformed by a Ras oncogene. The biological roles of RAP1A include inducing neurite outgrowth and embryonic angiogenesis(PMID: 17916086). As one member of RAS oncogene family, it is a widely expressed receptor, with high mRNA expression in many tissues, particularly abundant in the colon. In cells, RAP1A was localized in cytoplasm and cell membrane(PMID: 11359771, PMID: 11359771).

## Storage

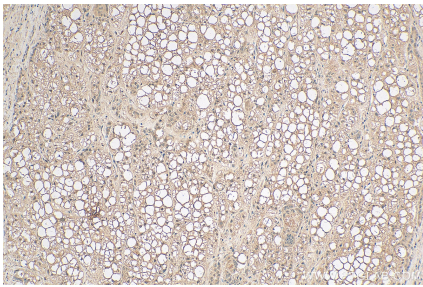
**Storage:**  
Store at -80°C.

**Storage Buffer:**  
PBS Only

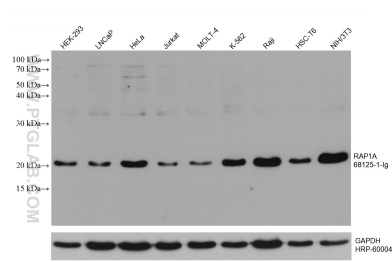
For technical support and original validation data for this product please contact:  
T: 1 (888) 4PTGLAB (1-888-478-4522) (toll free in USA), or 1(312) 455-8498 (outside USA)  
E: [proteintech@ptglab.com](mailto:proteintech@ptglab.com)  
W: [ptglab.com](http://ptglab.com)

This product is exclusively available under Proteintech Group brand and is not available to purchase from any other manufacturer.

## Selected Validation Data



Immunohistochemical analysis of paraffin-embedded human liver cancer tissue slide using 68125-1-Ig (RAP1A antibody) at dilution of 1:500 (under 10x lens). Heat mediated antigen retrieval with Tris-EDTA buffer (pH 9.0). This data was developed using the same antibody clone with 68125-1-PBS in a different storage buffer formulation.



Various lysates were subjected to SDS PAGE followed by western blot with 68125-1-Ig (RAP1A antibody) at dilution of 1:20000 incubated at room temperature for 1.5 hours. The membrane was stripped and reblotted with HRP-conjugated GAPDH Monoclonal antibody (HRP-60004) as loading control. This data was developed using the same antibody clone with 68125-1-PBS in a different storage buffer formulation.