

For Research Use Only

RBP5 Monoclonal antibody

Catalog Number: 68126-1-Ig



Basic Information

Catalog Number: 68126-1-Ig	GenBank Accession Number: BC029355	Purification Method: Protein G purification
Size: 150ul , Concentration: 1000 ug/ml by Nanodrop;	GeneID (NCBI): 83758	CloneNo.: 1G7E2
Source: Mouse	UNIPROT ID: P82980	Recommended Dilutions: WB 1:5000-1:50000 IF/ICC 1:400-1:1600
Isotype: IgG1	Full Name: retinol binding protein 5, cellular	
Immunogen Catalog Number: AG24562	Calculated MW: 135 aa, 16 kDa	
	Observed MW: 16-18 kDa	

Applications

Tested Applications: WB, IF/ICC, ELISA	Positive Controls:
Species Specificity: Human, pig	WB : pig kidney tissue, pig liver tissue, pig liver tissue IF/ICC : HepG2 cells, A431 cells

Background Information

RBP5 (CRBP III) belongs to the fatty-acid binding protein (FABP) family. Human liver and kidney contain the highest levels of CRBP III mRNA, and CRBP III is as a major human intracellular carrier of retinol (PMID:11274389). RBP5 iron response are reversible by genetic complementation. And increased RBP5 expression occurs by a post-transcriptional feedback mechanism whereby RBP5 interacts with its own, and with PAP2 mRNAs. RBP5 is the most significant of the proteins upregulated by iron starvation (PMID:34161395). RBP5 has an estimated molecular mass (15.9 kDa) typical of this protein superfamily (PMID:11274389).

Storage

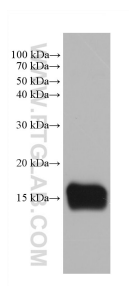
Storage:
Store at -20°C. Stable for one year after shipment.
Storage Buffer:
PBS with 0.02% sodium azide and 50% glycerol pH 7.3.
Aliquoting is unnecessary for -20°C storage

*** 20ul sizes contain 0.1% BSA

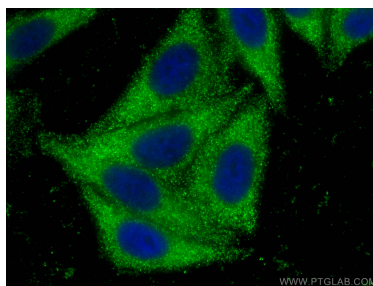
For technical support and original validation data for this product please contact:
T: 1 (888) 4PTGLAB (1-888-478-4522) (toll free in USA), or 1(312) 455-8498 (outside USA)
E: proteintech@ptglab.com
W: ptglab.com

This product is exclusively available under Proteintech Group brand and is not available to purchase from any other manufacturer.

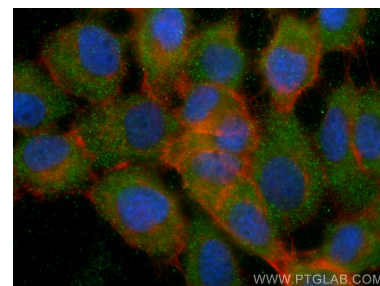
Selected Validation Data



pig kidney tissue were subjected to SDS PAGE followed by western blot with 68126-1-Ig (RBP5 antibody) at dilution of 1:10000 incubated at room temperature for 1.5 hours.



Immunofluorescent analysis of (-20°C Ethanol) fixed HepG2 cells using RBP5 antibody (68126-1-Ig, Clone: 1G7E2) at dilution of 1:800 and CoraLite®488-Conjugated Goat Anti-Mouse IgG(H+L).



Immunofluorescent analysis of (-20°C Ethanol) fixed A431 cells using RBP5 antibody (68126-1-Ig, Clone: 1G7E2) at dilution of 1:800 and CoraLite®488-Conjugated Goat Anti-Mouse IgG(H+L), C594-Phalloidin (red).