

For Research Use Only

# PFKP Monoclonal antibody, PBS Only

Catalog Number: 68129-1-PBS



## Basic Information

<b>Catalog Number:</b> 68129-1-PBS	<b>GenBank Accession Number:</b> BC029138	<b>Purification Method:</b> Protein G purification
<b>Size:</b> 100ug , Concentration: 1mg/ml by Nanodrop;	<b>GeneID (NCBI):</b> 5214	<b>CloneNo.:</b> 1H4D4
<b>Source:</b> Mouse	<b>UNIPROT ID:</b> Q01813	
<b>Isotype:</b> IgG1	<b>Full Name:</b> phosphofructokinase, platelet	
<b>Immunogen Catalog Number:</b> AG25206	<b>Calculated MW:</b> 784 aa, 86 kDa	
	<b>Observed MW:</b> 80-86 kDa	

## Applications

**Tested Applications:**  
WB, IF/ICC, Indirect ELISA

**Species Specificity:**  
human, mouse, rat, rabbit

## Background Information

PFKP(6-phosphofructokinase, platelet type) is also named as PFKF, PFK-C and belongs to the phosphofructokinase family. This form of PFK is best called the 'platelet' type and symbolized PFKP because it is the only form made by platelets, whereas fibroblasts have more than one form of PFK (Francke (1983)). PFK catalyzes the irreversible conversion of fructose-6-phosphate to fructose-1,6-bisphosphate and is a key regulatory enzyme in glycolysis. The observed molecular weight of PFKP monomer is 80-86 kDa. The molecular mass of PFKP dimer is 171 kDa (PMID: 28607489).

## Storage

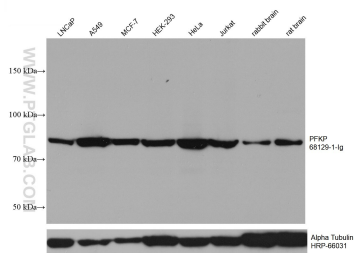
**Storage:**  
Store at -80°C.

**Storage Buffer:**  
PBS only

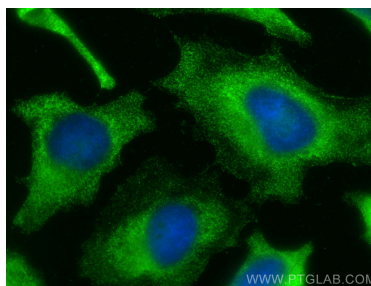
For technical support and original validation data for this product please contact:  
T: 1 (888) 4PTGLAB (1-888-478-4522) (toll free in USA), or 1(312) 455-8498 (outside USA)  
E: [proteintech@ptglab.com](mailto:proteintech@ptglab.com)  
W: [ptglab.com](http://ptglab.com)

This product is exclusively available under Proteintech Group brand and is not available to purchase from any other manufacturer.

## Selected Validation Data



Various lysates were subjected to SDS PAGE followed by western blot with 68129-1-Ig (PFKP antibody) at dilution of 1:20000 incubated at room temperature for 1.5 hours. The membrane was stripped and reblotted with HRP-conjugated Alpha Tubulin Monoclonal antibody (HRP-66031) as loading control. This data was developed using the same antibody clone with 68129-1-PBS in a different storage buffer formulation.



Immunofluorescent analysis of (-20°C Methanol) fixed HeLa cells using PFKP antibody (68129-1-Ig, Clone: 1H4D4 ) at dilution of 1:400 and CoraLite®488-Conjugated AffiniPure Goat Anti-Mouse IgG(H+L). This data was developed using the same antibody clone with 68129-1-PBS in a different storage buffer formulation.