

For Research Use Only

# RYBP Monoclonal antibody

Catalog Number: 68130-1-Ig



## Basic Information

<b>Catalog Number:</b> 68130-1-Ig	<b>GenBank Accession Number:</b> BC014959	<b>Purification Method:</b> Protein G purification
<b>Size:</b> 150ul , Concentration: 1000 ug/ml by Nanodrop;	<b>GeneID (NCBI):</b> 23429	<b>CloneNo.:</b> 2C6G7
<b>Source:</b> Mouse	<b>UNIPROT ID:</b> Q8N488	<b>Recommended Dilutions:</b> WB 1:5000-1:50000
<b>Isotype:</b> IgG1	<b>Full Name:</b> RING1 and YY1 binding protein	
<b>Immunogen Catalog Number:</b> AG31715	<b>Calculated MW:</b> 228 aa, 25 kDa	
	<b>Observed MW:</b> 32 kDa	

## Applications

<b>Tested Applications:</b> WB, ELISA	<b>Positive Controls:</b> WB : A549 cells, RAW 264.7 cells, HeLa cells, U2OS cells, HEK-293 cells, LNCaP cells, Jurkat cells, Daudi cells
<b>Species Specificity:</b> Human, mouse	

## Background Information

Polycomb repressive complexes (PRCs) are important chromatin regulators of embryonic stem (ES) cell function [PMID:22269950]. RYBP binds Polycomb H2A monoubiquitin ligases Ring1A and Ring1B and has been suggested to assist PRC localization to their targets. RYBP, firstly identified as a direct interactor with Ring1A, acts as transcriptional repressor in reporter assays, both in tissue culture cells and in the fly [PMID:16125914]

## Storage

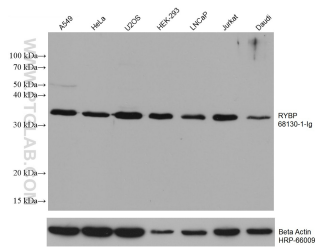
**Storage:**  
Store at -20°C. Stable for one year after shipment.  
**Storage Buffer:**  
PBS with 0.02% sodium azide and 50% glycerol pH 7.3.  
**Aliquoting is unnecessary for -20°C storage**

\*\*\* 20ul sizes contain 0.1% BSA

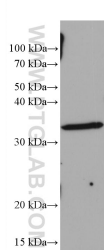
For technical support and original validation data for this product please contact:  
T: 1 (888) 4PTGLAB (1-888-478-4522) (toll free in USA), or 1(312) 455-8498 (outside USA)  
E: [proteintech@ptglab.com](mailto:proteintech@ptglab.com)  
W: [ptglab.com](http://ptglab.com)

This product is exclusively available under Proteintech Group brand and is not available to purchase from any other manufacturer.

## Selected Validation Data



Various lysates were subjected to SDS PAGE followed by western blot with 68130-1-Ig (RYBP antibody) at dilution of 1:20000 incubated at room temperature for 1.5 hours. The membrane was stripped and reblotted with HRP-conjugated Beta Actin Monoclonal antibody (HRP-66009) as loading control.



RAW 264.7 cells were subjected to SDS PAGE followed by western blot with 68130-1-Ig (RYBP antibody) at dilution of 1:20000 incubated at room temperature for 1.5 hours.