

For Research Use Only

RYBP Monoclonal antibody

Catalog Number: 68130-1-Ig



Basic Information

Catalog Number: 68130-1-Ig	GenBank Accession Number: BC014959	Purification Method: Protein G purification
Size: 150ul , Concentration: 1000 µg/ml by Nanodrop;	GeneID (NCBI): 23429	CloneNo.: 2C6G7
Source: Mouse	Full Name: RING1 and YY1 binding protein	Recommended Dilutions: WB 1:5000-1:50000
Isotype: IgG1	Calculated MW: 228 aa, 25 kDa	
Immunogen Catalog Number: AG31715	Observed MW: 32 kDa	

Applications

Tested Applications:

WB, ELISA

Species Specificity:

Human, mouse

Positive Controls:

WB : A549 cells, RAW 264.7 cells, HeLa cells, U2OS cells, HEK-293 cells, LNCaP cells, Jurkat cells, Daudi cells

Background Information

Polycomb repressive complexes (PRCs) are important chromatin regulators of embryonic stem (ES) cell function [PMID:22269950]. RYBP binds Polycomb H2A monoubiquitin ligases Ring1A and Ring1B and has been suggested to assist PRC localization to their targets. RYBP, firstly identified as a direct interactor with Ring1A, acts as transcriptional repressor in reporter assays, both in tissue culture cells and in the fly [PMID:16125914]

Storage

Storage:

Store at -20°C. Stable for one year after shipment.

Storage Buffer:

PBS with 0.02% sodium azide and 50% glycerol pH 7.3.

Aliquoting is unnecessary for -20°C storage

*** 20ul sizes contain 0.1% BSA

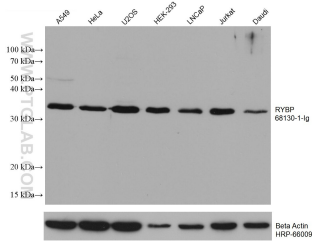
For technical support and original validation data for this product please contact:

T: 1 (888) 4PTGLAB (1-888-478-4522) (toll free
in USA), or 1(312) 455-8498 (outside USA)

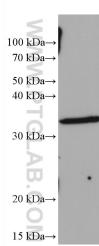
E: proteintech@ptglab.com
W: ptglab.com

This product is exclusively available under Proteintech Group brand and is not available to purchase from any other manufacturer.

Selected Validation Data



Various lysates were subjected to SDS PAGE followed by western blot with 68130-1-Ig (RYBP antibody) at dilution of 1:20000 incubated at room temperature for 1.5 hours. The membrane was stripped and reblotted with HRP-conjugated Beta Actin Monoclonal antibody (HRP-66009) as loading control.



RAW 264.7 cells were subjected to SDS PAGE followed by western blot with 68130-1-Ig (RYBP antibody) at dilution of 1:20000 incubated at room temperature for 1.5 hours.