

For Research Use Only

FITC Monoclonal antibody

Catalog Number: 68132-1-Ig



Basic Information

Catalog Number: 68132-1-Ig	GenBank Accession Number: GeneID (NCBI):	Purification Method: Protein A purification
Size: 150ul , Concentration: 1000 µg/ml by Nanodrop;	Full Name:	CloneNo.: 3C10A1
Source: Mouse		Recommended Dilutions: WB 1:5000-1:50000
Isotype: IgG2a		

Applications

Tested Applications: WB, ELISA	Positive Controls: WB : FITC-TDP43, FITC-Ag1231, BSA
Species Specificity: FITC	

Background Information

Fluorescein isothiocyanate (FITC) is a derivative of fluorescein used in wide-ranging applications. It is the original fluorescein molecule functionalized with an isothiocyanate reactive group (-N=C=S), replacing a hydrogen atom on the bottom ring of the structure. It is typically available as a mixture of isomers, fluorescein 5-isothiocyanate (5-FITC) and fluorescein 6-isothiocyanate (6-FITC). FITC is reactive towards nucleophiles including amine and sulfhydryl groups on proteins. CAS number of FITC: 27072-45-3 (mixture); 3326-32-7, 5-isomer; 18861-78-4 (6-isomer). This mouse monoclonal antibody detects the FITC only. This antibody can be coated in the plate to capture the FITC conjugated protein or antibody.

Storage

Storage:
Store at -20°C. Stable for one year after shipment.
Storage Buffer:
PBS with 0.02% sodium azide and 50% glycerol pH 7.3.
Aliquoting is unnecessary for -20°C storage

*** 20ul sizes contain 0.1% BSA

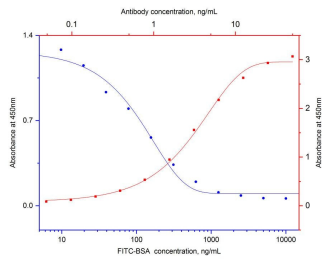
For technical support and original validation data for this product please contact:

T: 1 (888) 4PTGLAB (1-888-478-4522) (toll free in USA), or 1(312) 455-8498 (outside USA)

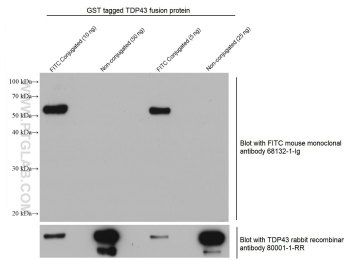
E: proteintech@ptglab.com
W: ptglab.com

This product is exclusively available under Proteintech Group brand and is not available to purchase from any other manufacturer.

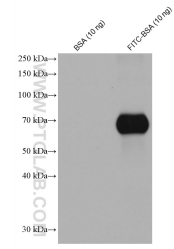
Selected Validation Data



Indirect ELISA and competitive ELISA results show that this antibody is specific to FITC. Indirect ELISA was performed by coating FITC conjugated BSA at 0ng/well followed by blocking with 1% BSA. Serial diluted primary antibody was added to the plates and incubated at 37°C. HRP-goat anti-mouse was used for detection (red curve, refer to top X-right Y axis). Competitive ELISA was performed similarly except that different



WB result of FITC antibody (68132-1-Ig; 1:40000; incubated at room temperature for 1.5 hours) with FITC conjugated protein and un-conjugated protein as negative control. Antibody to TDP-43 as the positive control to target protein.



WB results of FITC antibody (68132-1-Ig; 1:10000) with BSA and FITC conjugated BSA.