

For Research Use Only

# PLA2G4A Monoclonal antibody

Catalog Number: 68133-1-Ig



## Basic Information

<b>Catalog Number:</b> 68133-1-Ig	<b>GenBank Accession Number:</b> BC114340	<b>Purification Method:</b> Protein A purification
<b>Size:</b> 150ul, Concentration: 1000 µg/ml by Nanodrop;	<b>GeneID (NCBI):</b> 5321	<b>CloneNo.:</b> 2D10H8
<b>Source:</b> Mouse	<b>UNIPROT ID:</b> P47712	<b>Recommended Dilutions:</b> WB 1:5000-1:50000 IHC 1:500-1:2000 IF 1:200-1:800
<b>Isotype:</b> IgG1	<b>Full Name:</b> phospholipase A2, group IVA (cytosolic, calcium-dependent)	
<b>Immunogen Catalog Number:</b> AG32674	<b>Calculated MW:</b> 749 aa, 85 kDa	
	<b>Observed MW:</b> 85-100 kDa	

## Applications

### Tested Applications:

WB, IF, IHC, ELISA

### Species Specificity:

Human, mouse

**Note-IHC: suggested antigen retrieval with TE buffer pH 9.0; (\*) Alternatively, antigen retrieval may be performed with citrate buffer pH 6.0**

### Positive Controls:

**WB** : HEK-293 cells, HeLa cells, NIH/3T3 cells, A549 cells, K-562 cells

**IHC** : human lung cancer tissue,

**IF** : HeLa cells,

## Storage

### Storage:

Store at -20°C. Stable for one year after shipment.

### Storage Buffer:

PBS with 0.02% sodium azide and 50% glycerol pH 7.3.

Aliquoting is unnecessary for -20°C storage

\*\*\* 20ul sizes contain 0.1% BSA

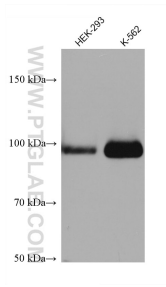
For technical support and original validation data for this product please contact:

T: 1 (888) 4PTGLAB (1-888-478-4522) (toll free in USA), or 1(312) 455-8498 (outside USA)

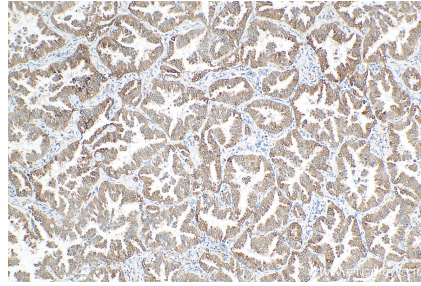
E: [proteintech@ptglab.com](mailto:proteintech@ptglab.com)  
W: [ptglab.com](http://ptglab.com)

This product is exclusively available under Proteintech Group brand and is not available to purchase from any other manufacturer.

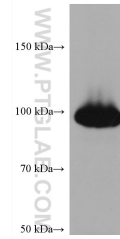
## Selected Validation Data



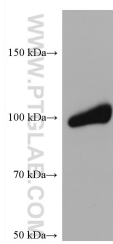
Various lysates were subjected to SDS PAGE followed by western blot with 68133-1-Ig (PLA2G4A antibody) at dilution of 1:10000 incubated at room temperature for 1.5 hours.



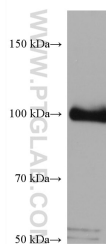
Immunohistochemical analysis of paraffin-embedded human lung cancer tissue slide using 68133-1-Ig (PLA2G4A antibody) at dilution of 1:1000 (under 10x lens). Heat mediated antigen retrieval with Tris-EDTA buffer (pH 9.0).



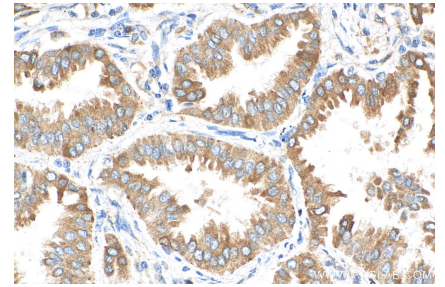
HeLa cells were subjected to SDS PAGE followed by western blot with 68133-1-Ig (PLA2G4A antibody) at dilution of 1:10000 incubated at room temperature for 1.5 hours.



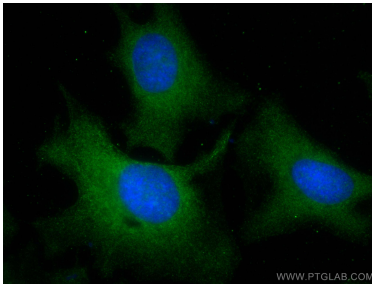
NIH/3T3 cells were subjected to SDS PAGE followed by western blot with 68133-1-Ig (PLA2G4A antibody) at dilution of 1:10000 incubated at room temperature for 1.5 hours.



A549 cells were subjected to SDS PAGE followed by western blot with 68133-1-Ig (PLA2G4A antibody) at dilution of 1:10000 incubated at room temperature for 1.5 hours.



Immunohistochemical analysis of paraffin-embedded human lung cancer tissue slide using 68133-1-Ig (PLA2G4A antibody) at dilution of 1:1000 (under 40x lens). Heat mediated antigen retrieval with Tris-EDTA buffer (pH 9.0).



Immunofluorescent analysis of (-20°C Methanol) fixed HeLa cells using PLA2G4A antibody (68133-1-Ig, Clone: 2D10H8) at dilution of 1:400 and CoraLite®488-Conjugated AffiniPure Goat Anti-Mouse IgG(H+L).