

For Research Use Only

UBE2D1/2/3/4 Monoclonal antibody



Catalog Number: 68138-1-Ig

Basic Information

Catalog Number: 68138-1-Ig	GenBank Accession Number: BC003395	Purification Method: Protein A purification
Size: 150ul , Concentration: 1000 µg/ml by Nanodrop;	GeneID (NCBI): 7323	CloneNo.: 1C7D12
Source: Mouse	Full Name: ubiquitin-conjugating enzyme E2 3 (UBC4/5 homolog, yeast)	Recommended Dilutions: WB 1:5000-1:50000 IF 1:400-1:1600
Isotype: IgG1	Calculated MW: 17 kDa	
Immunogen Catalog Number: AG2278	Observed MW: 17 kDa	

Applications

Tested Applications:
IF, WB, ELISA

Species Specificity:
Human, Mouse, Rat

Positive Controls:

WB : HEK-293 cells, LNCaP cells, HeLa cells, Jurkat cells, K-562 cells, HSC-T6 cells, NIH/3T3 cells, 4T1 cells

IF : A431 cells,

Background Information

Ubiquitination is a post-translational modification pathway or is part of the specific protein-degradation pathway by the 26S proteasome. Ubiquitination of a target protein involves multistep enzymatic reaction catalyzed by a cascade of enzymes including Ub-activating enzymes (E1s), Ub-conjugating enzymes (E2s) and Ub ligases (E3s) (PMID: 23542885). UBE2D family, which has 4 members named as UBE2D1/2/3/4, is an E2 ubiquitin-conjugating enzyme family in the ubiquitin-proteasome system. This antibody can recognize all the four members of UBE2D due to the high homology.

Storage

Storage:
Store at -20°C. Stable for one year after shipment.

Storage Buffer:
PBS with 0.02% sodium azide and 50% glycerol pH 7.3.

Aliquoting is unnecessary for -20°C storage

*** 20ul sizes contain 0.1% BSA

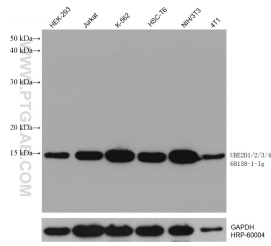
For technical support and original validation data for this product please contact:

T: 1 (888) 4PTGLAB (1-888-478-4522) (toll free
in USA), or 1(312) 455-8498 (outside USA)

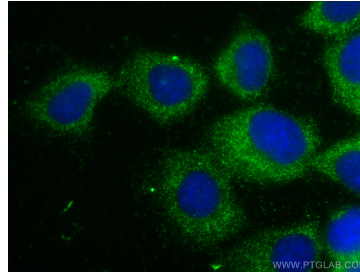
E: proteintech@ptglab.com
W: ptglab.com

This product is exclusively available under Proteintech Group brand and is not available to purchase from any other manufacturer.

Selected Validation Data



Various lysates were subjected to SDS PAGE followed by western blot with 68138-1-Ig (UBE2D3 antibody) at dilution of 1:10000 incubated at room temperature for 1.5 hours. The membrane was stripped and reblotted with HRP-conjugated GAPDH Monoclonal antibody (HRP-60004) as loading control.



Immunofluorescent analysis of (-20°C Methanol) fixed A431 cells using UBE2D1/2/3/4 antibody (68138-1-Ig, Clone: 1C7D12) at dilution of 1:800 and CoraLite®488-Conjugated AffiniPure Goat Anti-Mouse IgG(H+L).