

For Research Use Only

TACSTD2/TROP2 Monoclonal antibody, PBS Only

Catalog Number: 68141-1-PBS



Basic Information

Catalog Number:

68141-1-PBS

Size:

100ug , Concentration: 1mg/ml by
Nanodrop;

Source:

Mouse

Isotype:

IgG2b

Immunogen Catalog Number:

AG25775

GenBank Accession Number:

BC009409

GeneID (NCBI):

4070

UNIPROT ID:

P09758

Full Name:

tumor-associated calcium signal
transducer 2

Calculated MW:

36 kDa

Observed MW:

40-50 kDa

Purification Method:

Protein A purification

CloneNo.:

5A6B1

Applications

Tested Applications:

WB, IHC, IF/ICC, Indirect ELISA

Species Specificity:

human

Background Information

Trophoblast cell surface antigen 2 (TROP2), also named as TACSTD2, is a transmembrane glycoprotein. TROP2 plays a role in transducing intracellular calcium signals. It is expressed in trophoblast cells, cornea and multi-stratified epithelia. TROP2 is overexpressed in most carcinomas and is involved in cancer proliferation, migration, invasion, and metastasis. Congenital mutations of TROP2 cause a rare autosomal recessive disease which may lead to blindness-the gelatinous drop-like corneal disease (PMID: 35688908).

Storage

Storage:

Store at -80°C.

Storage Buffer:

PBS Only

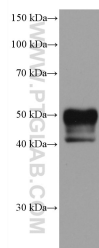
For technical support and original validation data for this product please contact:

T: 1 (888) 4PTGLAB (1-888-478-4522) (toll free
in USA), or 1(312) 455-8498 (outside USA)

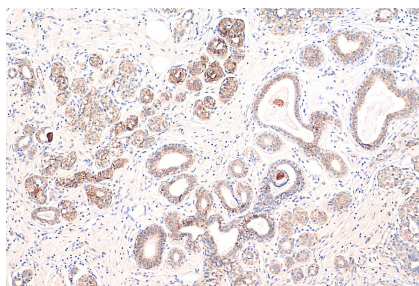
E: proteintech@ptglab.com
W: ptglab.com

This product is exclusively available under Proteintech Group brand and is not available to purchase from any other manufacturer.

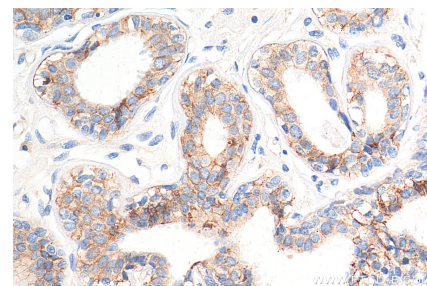
Selected Validation Data



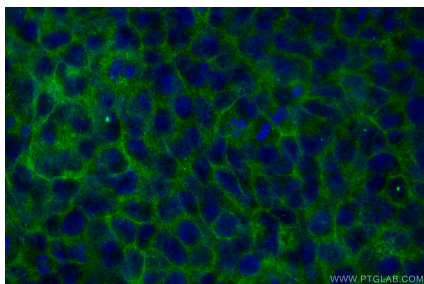
HaCaT cells were subjected to SDS PAGE followed by western blot with 68141-1-Ig (TACSTD2/TROP2 antibody) at dilution of 1:2500 incubated at room temperature for 1.5 hours. This data was developed using the same antibody clone with 68141-1-PBS in a different storage buffer formulation.



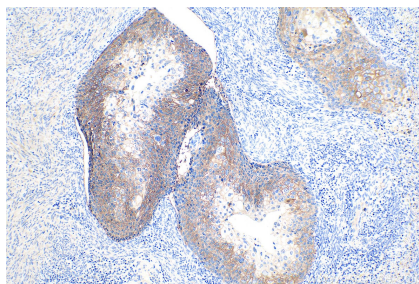
Immunohistochemical analysis of paraffin-embedded human breast cancer tissue slide using 68141-1-Ig (TACSTD2/TROP2 antibody) at dilution of 1:1000 (under 10x lens). Heat mediated antigen retrieval with Tris-EDTA buffer (pH 9.0). This data was developed using the same antibody clone with 68141-1-PBS in a different storage buffer formulation.



Immunohistochemical analysis of paraffin-embedded human breast cancer tissue slide using 68141-1-Ig (TACSTD2/TROP2 antibody) at dilution of 1:1000 (under 40x lens). Heat mediated antigen retrieval with Tris-EDTA buffer (pH 9.0). This data was developed using the same antibody clone with 68141-1-PBS in a different storage buffer formulation.



Immunofluorescent analysis of (-20°C Methanol) fixed HaCaT cells using TACSTD2/TROP2 antibody (68141-1-Ig, Clone: 5A6B1) at dilution of 1:800 and CoraLite®488-Conjugated AffiniPure Goat Anti-Mouse IgG(H+L). This data was developed using the same antibody clone with 68141-1-PBS in a different storage buffer formulation.



Immunohistochemical analysis of paraffin-embedded human cervical cancer tissue slide using 68141-1-Ig (TACSTD2 antibody) at dilution of 1:16000 (under 10x lens). Heat mediated antigen retrieval with Tris-EDTA buffer (pH 9.0). This data was developed using the same antibody clone with 68141-1-PBS in a different storage buffer formulation.