

For Research Use Only

MYL6 Monoclonal antibody

Catalog Number: 68142-1-Ig

Featured Product

2 Publications



Basic Information

Catalog Number:

68142-1-Ig

Size:

150ul, Concentration: 1000 ug/ml by Nanodrop;

Source:

Mouse

Isotype:

IgG1

Immunogen Catalog Number:

AG13091

GenBank Accession Number:

BC006781

GeneID (NCBI):

4637

UNIPROT ID:

P60660

Full Name:

myosin, light chain 6, alkali, smooth muscle and non-muscle

Calculated MW:

17 kDa

Observed MW:

17-25 kDa

Purification Method:

Protein G purification

CloneNo.:

2G4C9

Recommended Dilutions:

WB 1:5000-1:50000

IHC 1:1000-1:4000

IF/ICC 1:500-1:2000

Applications

Tested Applications:

WB, IHC, IF/ICC, ELISA

Cited Applications:

WB, IHC

Species Specificity:

Human, mouse, rat, pig, rabbit

Cited Species:

human, mouse

Note-IHC: suggested antigen retrieval with TE buffer pH 9.0; (*) Alternatively, antigen retrieval may be performed with citrate buffer pH 6.0

Positive Controls:

WB: pig heart tissue, A549 cells, rabbit heart tissue, rat heart tissue, mouse heart tissue

IHC: human colon tissue, rat heart tissue, mouse skeletal muscle tissue, rat skeletal muscle tissue, human kidney tissue, mouse heart tissue

IF/ICC: HeLa cells,

Background Information

Myosin is a hexameric ATPase cellular motor protein. It is composed of two heavy chains, two nonphosphorylatable alkali light chains, and two phosphorylatable regulatory light chains. MYL6 (Myosin light polypeptide 6), encodes a myosin alkali light chain that is expressed in smooth muscle and non-muscle tissues. Expression of MYL6 is high in fibroblasts and myoblasts (PMID:8188229, PubMed:2304459, PMID:2722814).

Notable Publications

Author	Pubmed ID	Journal	Application
Weixing Yang	39579820	Int J Biol Macromol	IHC
Kangnan Zhang	39146597	Transl Oncol	WB,IHC

Storage

Storage:

Store at -20°C. Stable for one year after shipment.

Storage Buffer:

PBS with 0.02% sodium azide and 50% glycerol pH 7.3.

Aliquoting is unnecessary for -20°C storage

*** 20ul sizes contain 0.1% BSA

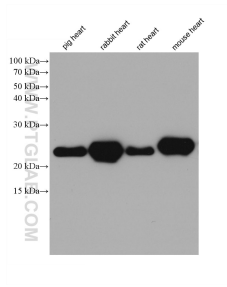
For technical support and original validation data for this product please contact:

T: 1 (888) 4PTGLAB (1-888-478-4522) (toll free in USA), or 1(312) 455-8498 (outside USA)

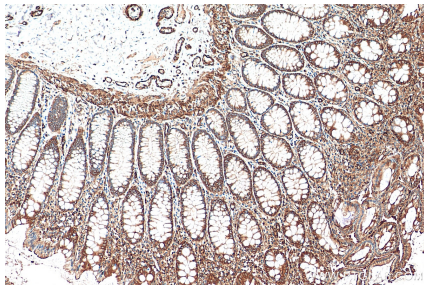
E: proteintech@ptglab.com
W: ptglab.com

This product is exclusively available under Proteintech Group brand and is not available to purchase from any other manufacturer.

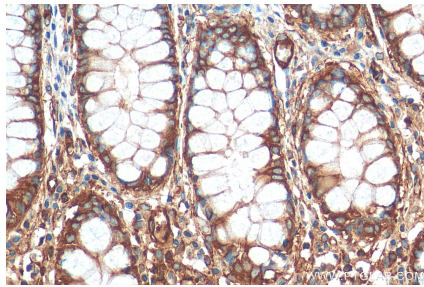
Selected Validation Data



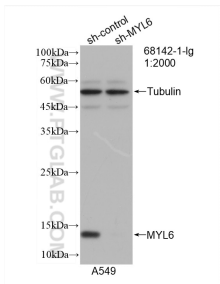
Various lysates were subjected to SDS PAGE followed by western blot with 68142-1-Ig (MYL6 antibody) at dilution of 1:20000 incubated at room temperature for 1.5 hours.



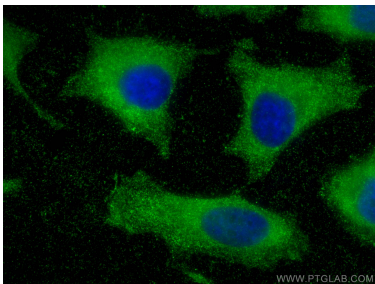
Immunohistochemical analysis of paraffin-embedded human colon tissue slide using 68142-1-Ig (MYL6 antibody) at dilution of 1:2000 (under 10x lens). Heat mediated antigen retrieval with Tris-EDTA buffer (pH 9.0).



Immunohistochemical analysis of paraffin-embedded human colon tissue slide using 68142-1-Ig (MYL6 antibody) at dilution of 1:2000 (under 40x lens). Heat mediated antigen retrieval with Tris-EDTA buffer (pH 9.0).



WB result of MYL6 antibody (68142-1-Ig; 1:2000; incubated at room temperature for 1.5 hours) with sh-Control and sh-MYL6 transfected A549 cells.



Immunofluorescent analysis of (-20°C Methanol) fixed HeLa cells using MYL6 antibody (68142-1-Ig, Clone: 2G4C9) at dilution of 1:1000 and CoraLite® 488-Conjugated Goat Anti-Mouse IgG(H+L).