

For Research Use Only

MYL6 Monoclonal antibody, PBS Only



Catalog Number: 68142-1-PBS

Featured Product

Basic Information

Catalog Number:

68142-1-PBS

Size:

100ug , Concentration: 1 mg/ml by Nanodrop;

Source:

Mouse

Isotype:

IgG1

Immunogen Catalog Number:

AG13091

GenBank Accession Number:

BC006781

GeneID (NCBI):

4637

UNIPROT ID:

P60660

Full Name:

myosin, light chain 6, alkali, smooth muscle and non-muscle

Calculated MW:

17 kDa

Observed MW:

17-25 kDa

Purification Method:

Protein G purification

CloneNo.:

2G4C9

Applications

Tested Applications:

WB, IF, IHC, Indirect ELISA

Species Specificity:

Human, mouse, rat, pig, rabbit

Background Information

Myosin is a hexameric ATPase cellular motor protein. It is composed of two heavy chains, two nonphosphorylatable alkali light chains, and two phosphorylatable regulatory light chains. MYL6 (Myosin light polypeptide 6), encodes a myosin alkali light chain that is expressed in smooth muscle and non-muscle tissues. Expression of MYL6 is high in fibroblasts and myoblasts (PMID:8188229, PubMed:2304459, PMID:2722814).

Storage

Storage:

Store at -80°C.

Storage Buffer:

PBS Only

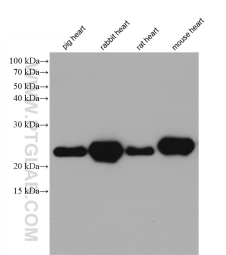
For technical support and original validation data for this product please contact:

T: 1 (888) 4PTGLAB (1-888-478-4522) (toll free in USA), or 1(312) 455-8498 (outside USA)

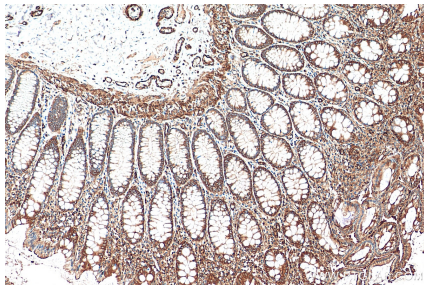
E: proteintech@ptglab.com
W: ptglab.com

This product is exclusively available under Proteintech Group brand and is not available to purchase from any other manufacturer.

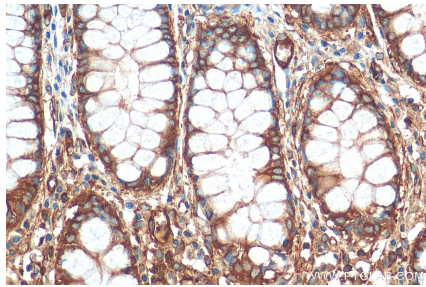
Selected Validation Data



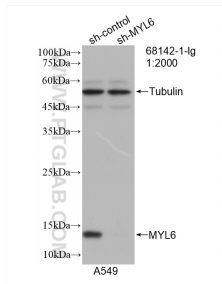
Various lysates were subjected to SDS PAGE followed by western blot with 68142-1-Ig (MYL6 antibody) at dilution of 1:20000 incubated at room temperature for 1.5 hours. This data was developed using the same antibody clone with 68142-1-PBS in a different storage buffer formulation.



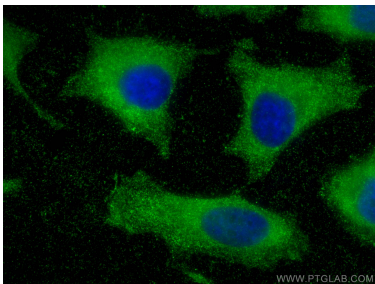
Immunohistochemical analysis of paraffin-embedded human colon tissue slide using 68142-1-Ig (MYL6 antibody) at dilution of 1:2000 (under 10x lens). Heat mediated antigen retrieval with Tris-EDTA buffer (pH 9.0). This data was developed using the same antibody clone with 68142-1-PBS in a different storage buffer formulation.



Immunohistochemical analysis of paraffin-embedded human colon tissue slide using 68142-1-Ig (MYL6 antibody) at dilution of 1:2000 (under 40x lens). Heat mediated antigen retrieval with Tris-EDTA buffer (pH 9.0). This data was developed using the same antibody clone with 68142-1-PBS in a different storage buffer formulation.



WB result of MYL6 antibody (68142-1-Ig; 1:2000; incubated at room temperature for 1.5 hours) with sh-Control and sh-MYL6 transfected A549 cells. This data was developed using the same antibody clone with 68142-1-PBS in a different storage buffer formulation.



Immunofluorescent analysis of (-20°C Methanol) fixed HeLa cells using MYL6 antibody (68142-1-Ig, Clone: 2G4C9) at dilution of 1:1000 and Coralite®488-Conjugated AffiniPure Goat Anti-Mouse IgG(H+L). This data was developed using the same antibody clone with 68142-1-PBS in a different storage buffer formulation.