

For Research Use Only

ARPC2 Monoclonal antibody

Catalog Number: 68145-1-Ig



Basic Information

Catalog Number: 68145-1-Ig	GenBank Accession Number: BC000590	Purification Method: Protein A purification
Size: 150ul, Concentration: 1000 µg/ml by Nanodrop;	GeneID (NCBI): 10109	CloneNo.: 1D8E3
Source: Mouse	UNIPROT ID: O15144	Recommended Dilutions: WB 1:5000-1:50000 IHC 1:1000-1:4000 IF 1:1000-1:4000
Isotype: IgG1	Full Name: actin related protein 2/3 complex, subunit 2, 34kDa	
Immunogen Catalog Number: AG7082	Calculated MW: 34 kDa	
	Observed MW: 34 kDa	

Applications

Tested Applications:
WB, IF, FC, IHC, ELISA

Species Specificity:
Human, mouse, rat, pig, rabbit

Note-IHC: suggested antigen retrieval with TE buffer pH 9.0; (*) Alternatively, antigen retrieval may be performed with citrate buffer pH 6.0

Positive Controls:

WB : HeLa cells, HEK-293 cells, HepG2 cells, K-562 cells, human peripheral blood platelets, pig brain tissue, rabbit brain tissue, rat brain tissue, mouse brain tissue

IHC : human stomach cancer tissue,

IF : HeLa cells,

Storage

Storage:
Store at -20°C. Stable for one year after shipment.
Storage Buffer:
PBS with 0.02% sodium azide and 50% glycerol pH 7.3.
Aliquoting is unnecessary for -20°C storage

*** 20ul sizes contain 0.1% BSA

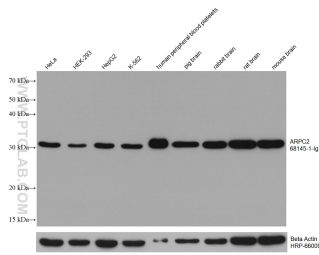
For technical support and original validation data for this product please contact:

T: 1 (888) 4PTGLAB (1-888-478-4522) (toll free in USA), or 1(312) 455-8498 (outside USA)

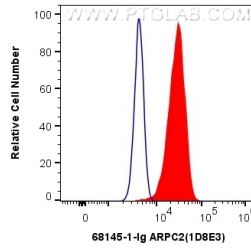
E: proteintech@ptglab.com
W: ptglab.com

This product is exclusively available under Proteintech Group brand and is not available to purchase from any other manufacturer.

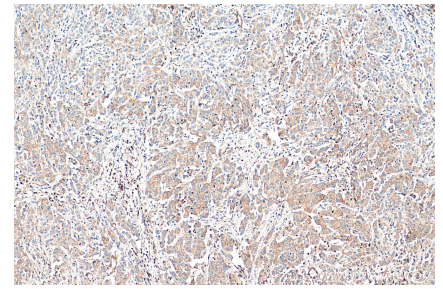
Selected Validation Data



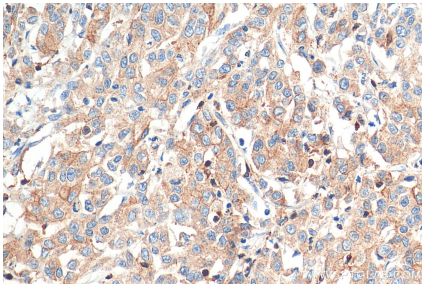
Various lysates were subjected to SDS PAGE followed by western blot with 68145-1-Ig (ARPC2 antibody) at dilution of 1:20000 incubated at room temperature for 1.5 hours. The membrane was stripped and reblotted with HRP-conjugated Beta Actin Monoclonal antibody (HRP-66009) as loading control.



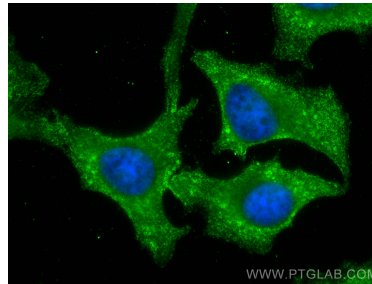
1×10^6 HeLa cells were intracellularly stained with 0.4 ug Anti-Human ARPC2 (68145-1-Ig, Clone:1D8E3) and CoraLite®488-Conjugated AffiniPure Goat Anti-Mouse IgG(H+L) at dilution 1:1000 (red), or 0.4 ug Mouse IgG1 Isotype Control (MOPC-21) (65124-1-Ig, Clone: MOPC-21) (blue). Cells were fixed with 4% PFA and permeabilized with Flow Cytometry Perm Buffer (PF00011-C).



Immunohistochemical analysis of paraffin-embedded human stomach cancer tissue slide using 68145-1-Ig (ARPC2 antibody) at dilution of 1:2000 (under 10x lens). Heat mediated antigen retrieval with Tris-EDTA buffer (pH 9.0).



Immunohistochemical analysis of paraffin-embedded human stomach cancer tissue slide using 68145-1-Ig (ARPC2 antibody) at dilution of 1:2000 (under 40x lens). Heat mediated antigen retrieval with Tris-EDTA buffer (pH 9.0).



Immunofluorescent analysis of (-20°C Methanol) fixed HeLa cells using ARPC2 antibody (68145-1-Ig, Clone: 1D8E3) at dilution of 1:2000 and CoraLite®488-Conjugated AffiniPure Goat Anti-Mouse IgG(H+L).