

For Research Use Only

HBS1L Monoclonal antibody

Catalog Number: 68146-1-Ig

Featured Product



Basic Information

Catalog Number:

68146-1-Ig

Size:

150ul, Concentration: 1000 ug/ml by Nanodrop;

Source:

Mouse

Isotype:

IgG1

Immunogen Catalog Number:

AG0388

GenBank Accession Number:

BC001465

GeneID (NCBI):

10767

UNIPROT ID:

Q9Y450

Full Name:

HBS1-like (S. cerevisiae)

Calculated MW:

75 kDa

Observed MW:

75 kDa

Purification Method:

Protein G purification

CloneNo.:

1A10C4

Recommended Dilutions:

WB 1:5000-1:50000

IF/ICC 1:200-1:800

Applications

Tested Applications:

WB, IF/ICC, ELISA

Species Specificity:

Human

Positive Controls:

WB : NCI-H1299 cells, HEK-293 cells, HepG2 cells, Jurkat cells, K-562 cells, LNCaP cells, HeLa cells

IF/ICC : U2OS cells,

Background Information

HBS1L (HBS1-like), also known as EF-1a or ERF5, is a 684 amino acid protein that belongs to the GTP-binding elongation factor family and exists as multiple alternatively spliced isoforms. Expressed in kidney, brain, heart, placenta, liver, muscle and pancreas, HBS1L is thought to play a role in controlling fetal hemoglobin levels, specifically influencing platelet, monocyte and erythrocyte hemoglobin content. The gene encoding HBS1L maps to a locus on human chromosome 6 that is associated with sickle cell anemia and beta-thalassemia, suggesting a role for HBS1L in the pathogenesis of blood disorders. This antibody specifically recognizes the 75kd human HBS1L protein.

Storage

Storage:

Store at -20°C. Stable for one year after shipment.

Storage Buffer:

PBS with 0.02% sodium azide and 50% glycerol pH 7.3.

Aliquoting is unnecessary for -20°C storage

*** 20ul sizes contain 0.1% BSA

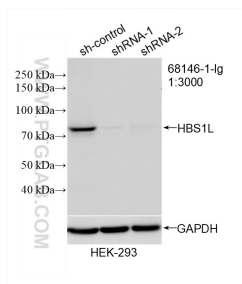
For technical support and original validation data for this product please contact:

T: 1 (888) 4PTGLAB (1-888-478-4522) (toll free in USA), or 1(312) 455-8498 (outside USA)

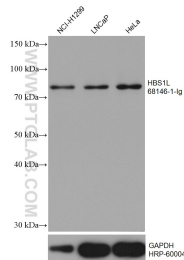
E: proteintech@ptglab.com
W: ptglab.com

This product is exclusively available under Proteintech Group brand and is not available to purchase from any other manufacturer.

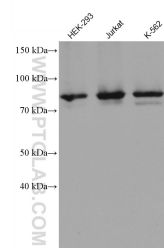
Selected Validation Data



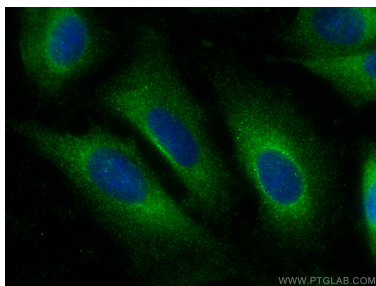
WB result of HBS1L antibody (68146-1-Ig; 1:3000; incubated at room temperature for 1.5 hours) with sh-Control and sh-HBS1L transfected HEK-293 cells.



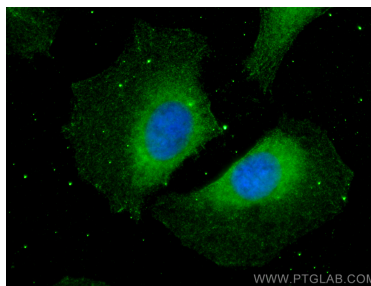
Various lysates were subjected to SDS PAGE followed by western blot with 68146-1-Ig (HBS1L antibody) at dilution of 1:10000 incubated at room temperature for 1.5 hours. The membrane was stripped and reblotted with HRP-conjugated GAPDH Monoclonal antibody (HRP-60004) as loading control.



Various lysates were subjected to SDS PAGE followed by western blot with 68146-1-Ig (HBS1L antibody) at dilution of 1:10000 incubated at room temperature for 1.5 hours.



Immunofluorescent analysis of (-20°C Ethanol) fixed U2OS cells using HBS1L antibody (68146-1-Ig, Clone: 1A10C4) at dilution of 1:800 and CoraLite®488-Conjugated AffiniPure Goat Anti-Mouse IgG(H+L).



Immunofluorescent analysis of (-20°C Methanol) fixed U2OS cells using HBS1L antibody (68146-1-Ig, Clone: 1A10C4) at dilution of 1:400 and CoraLite®488-Conjugated AffiniPure Goat Anti-Mouse IgG(H+L).