

ENO3 Monoclonal antibody

Catalog Number: 68147-1-Ig

Basic Information

Catalog Number: 68147-1-Ig	GenBank Accession Number: BC017249	Purification Method: Protein A purification
Size: 150ul , Concentration: 1000 ug/ml by Nanodrop and 386 ug/ml by Bradford method using BSA as the standard;	GeneID (NCBI): 2027	CloneNo.: 2C12G3
Source: Mouse	UNIPROT ID: P13929	Recommended Dilutions: WB 1:5000-1:50000 IF/ICC 1:200-1:800
Isotype: IgG2b	Full Name: enolase 3 (beta, muscle)	
Immunogen Catalog Number: AG9642	Calculated MW: 434 aa, 47 kDa	
	Observed MW: 42-47 kDa	

Applications

Tested Applications: WB, IF/ICC, ELISA	Positive Controls:
Species Specificity: Human, Mouse, Rat, Pig	WB : HeLa cells, HEK-293 cells, HepG2 cells, Jurkat cells, pig skeletal muscle tissue, rabbit skeletal muscle tissue, rat skeletal muscle tissue, mouse skeletal muscle tissue, mouse brain tissue
	IF/ICC : HeLa cells,

Background Information

Enolase 3 (ENO3) encodes the β -subunit of enolase, which is distributed in various tissues, including liver, lung, skeletal, and heart. ENO3 plays an important role in both glycogen and cholesterol metabolism. It has been demonstrated that ENO3 deficiency may lead to metabolic myopathies, and ENO3 speeds up hepatic cholesterol ester cumulation induced via the mediation of cholesteryl ester generation. Apart from these, ENO3 has also been involved in various tumors, though the results are contradictory. For example, ENO3 is up-regulated in STK11 mutant pulmonary carcinoma and colorectal carcinoma, while down-regulated in pancreatic cancer and hepatocellular carcinomas. ENO3 has 3 isoforms with the molecular mass of 42-47 kDa. (PMID: 33987359, 35004693)

Storage

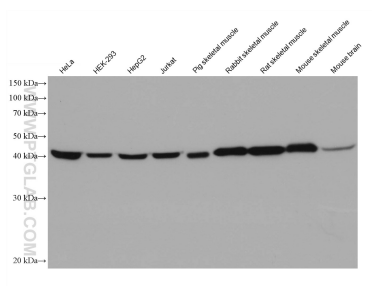
Storage:
Store at -20°C. Stable for one year after shipment.
Storage Buffer:
PBS with 0.02% sodium azide and 50% glycerol pH 7.3.
Aliquoting is unnecessary for -20°C storage

*** 20ul sizes contain 0.1% BSA

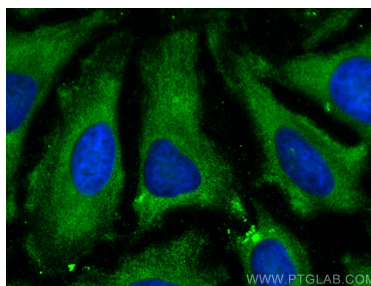
For technical support and original validation data for this product please contact:
T: 1 (888) 4PTGLAB (1-888-478-4522) (toll free in USA), or 1(312) 455-8498 (outside USA)
E: proteintech@ptglab.com
W: ptglab.com

This product is exclusively available under Proteintech Group brand and is not available to purchase from any other manufacturer.

Selected Validation Data



Various lysates were subjected to SDS PAGE followed by western blot with 68147-1-Ig (ENO3 antibody) at dilution of 1:10000 incubated at room temperature for 1.5 hours.



Immunofluorescent analysis of (-20°C Methanol) fixed HeLa cells using ENO3 antibody (68147-1-Ig, Clone: 2C12G3) at dilution of 1:400 and CoraLite®488-Conjugated AffiniPure Goat Anti-Mouse IgG(H+L).