

For Research Use Only

EEF1G Monoclonal antibody

Catalog Number: 68148-1-Ig



Basic Information

Catalog Number: 68148-1-Ig	GenBank Accession Number: BC006520	Purification Method: Protein A purification
Size: 150ul , Concentration: 1000 µg/ml by Nanodrop;	GeneID (NCBI): 1937	CloneNo.: 1G7C6
Source: Mouse	Full Name: eukaryotic translation elongation factor 1 gamma	Recommended Dilutions: WB 1:5000-1:50000 IF 1:400-1:1600
Isotype: IgG2b	Calculated MW: 50 kDa	
Immunogen Catalog Number: AG0218	Observed MW: 50 kDa	

Applications

Tested Applications:
IF, WB, ELISA

Species Specificity:
Human, Pig, Rabbit

Positive Controls:

WB : U2OS cells, HeLa cells, MCF-7 cells, pig heart tissue, A549 cells, HEK-293 cells, rabbit heart tissue, pig brain tissue, rabbit brain tissue

IF : HeLa cells,

Background Information

Eukaryotic translation elongation factor 1 (EEF1G, synonym: EF1G) is a subunit of the elongation factor-1 complex, which is responsible for the enzymatic delivery of aminoacyl tRNAs to the ribosome. This subunit contains an N-terminal glutathione transferase domain, which may be involved in regulating the assembly of multisubunit complexes containing this elongation factor and aminoacyl-tRNA synthetases.

Storage

Storage:
Store at -20°C. Stable for one year after shipment.

Storage Buffer:
PBS with 0.02% sodium azide and 50% glycerol pH 7.3.

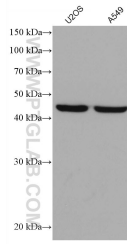
Aliquoting is unnecessary for -20°C storage

*** 20ul sizes contain 0.1% BSA

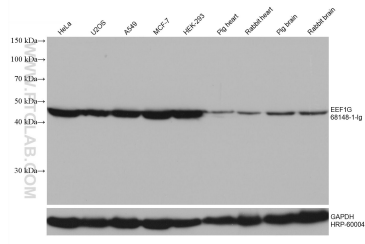
For technical support and original validation data for this product please contact:
T: 1 (888) 4PTGLAB (1-888-478-4522) (toll free in USA), or 1(312) 455-8498 (outside USA)
E: proteintech@ptglab.com
W: ptglab.com

This product is exclusively available under Proteintech Group brand and is not available to purchase from any other manufacturer.

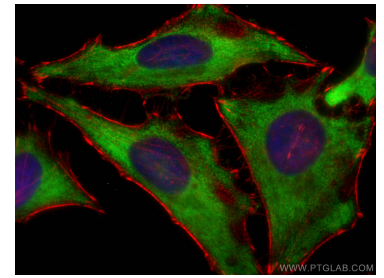
Selected Validation Data



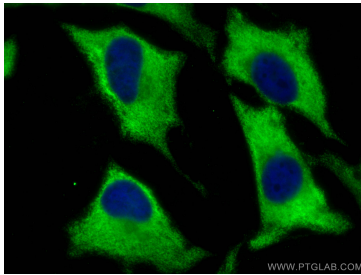
Various lysates were subjected to SDS PAGE followed by western blot with 68148-1-Ig (EEF1G antibody) at dilution of 1:10000 incubated at room temperature for 1.5 hours.



Various lysates were subjected to SDS PAGE followed by western blot with 68148-1-Ig (EEF1G antibody) at dilution of 1:10000 incubated at room temperature for 1.5 hours. The membrane was stripped and reblotted with HRP-conjugated GAPDH Monoclonal antibody (HRP-60004) as loading control.



Immunofluorescent analysis of (-20°C Ethanol) fixed HeLa cells using EEF1G antibody (68148-1-Ig, Clone: 1G7C6) at dilution of 1:800 and CoraLite@488-Conjugated AffiniPure Goat Anti-Mouse IgG(H+L), CL594-Phalloidin (red).



Immunofluorescent analysis of (-20°C Ethanol) fixed HeLa cells using EEF1G antibody (68148-1-Ig, Clone: 1G7C6) at dilution of 1:800 and CoraLite@488-Conjugated AffiniPure Goat Anti-Mouse IgG(H+L).