

For Research Use Only

DDAH2 Monoclonal antibody, PBS Only (Detector)

Catalog Number: 68154-1-PBS



Basic Information

Catalog Number: 68154-1-PBS	GenBank Accession Number: BC001435	Purification Method: Protein A purification
Size: 100ug , Concentration: 1mg/ml by Nanodrop;	GeneID (NCBI): 23564	CloneNo.: 1A10G3
Source: Mouse	UNIPROT ID: O95865	
Isotype: IgG3	Full Name: dimethylarginine dimethylaminohydrolase 2	
Immunogen Catalog Number: AG7127	Calculated MW: 29 kDa	
	Observed MW: 30 kDa	

Applications

Tested Applications:
WB, Cytometric bead array, Indirect ELISA

Species Specificity:
human, mouse, rat, rabbit

Product Information

68154-1-PBS targets DDAH2 as part of a matched antibody pair:

MP50417-2: 68154-4-PBS capture and 68154-1-PBS detection (validated in Cytometric bead array)

Unconjugated mouse monoclonal antibody pair in PBS only (BSA and azide free) storage buffer at a concentration of 1 mg/mL, ready for conjugation.

This conjugation ready format makes antibodies ideal for use in many applications including: ELISAs, multiplex assays requiring matched pairs, mass cytometry, and multiplex imaging applications. Antibody use should be optimized by the end user for each application and assay.

Background Information

The DDAH family of proteins is formed by two isoforms, DDAH-1 and DDAH-2, both of which utilize ADMA as their substrate and increase NOS activity. DDAH-2, also named as DDAH, G6A, NG30, is the most prevalent isoform in blood vessels and endothelium and is important for embryonic development. It has also been linked to other diseases, such as hypertension, cerebral hemorrhage, cardiac disease, and diabetes. In cultured human endothelial cells, DDAH-2 had been found only in the cytosol, but in the nuclei of rat vascular smooth muscle cells.

Storage

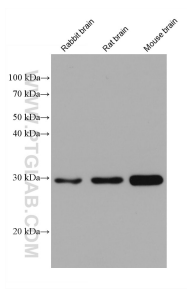
Storage:
Store at -80°C.

Storage Buffer:
PBS Only

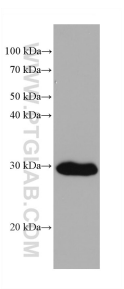
For technical support and original validation data for this product please contact:
T: 1 (888) 4PTGLAB (1-888-478-4522) (toll free in USA), or 1(312) 455-8498 (outside USA)
E: proteintech@ptglab.com
W: ptglab.com

This product is exclusively available under Proteintech Group brand and is not available to purchase from any other manufacturer.

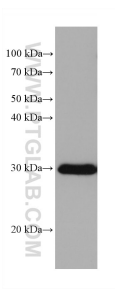
Selected Validation Data



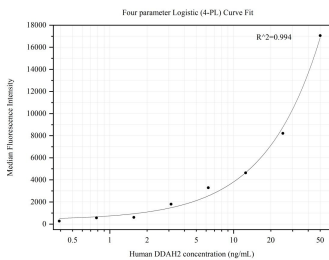
Various lysates were subjected to SDS PAGE followed by western blot with 68154-1-Ig (DDAH2 antibody) at dilution of 1:10000 incubated at room temperature for 1.5 hours. This data was developed using the same antibody clone with 68154-1-PBS in a different storage buffer formulation.



mouse retina tissue were subjected to SDS PAGE followed by western blot with 68154-1-Ig (DDAH2 antibody) at dilution of 1:10000 incubated at room temperature for 1.5 hours. This data was developed using the same antibody clone with 68154-1-PBS in a different storage buffer formulation.



rat colon tissue were subjected to SDS PAGE followed by western blot with 68154-1-Ig (DDAH2 antibody) at dilution of 1:10000 incubated at room temperature for 1.5 hours. This data was developed using the same antibody clone with 68154-1-PBS in a different storage buffer formulation.



Cytometric bead array standard curve of MP50417-2, DDAH2 Monoclonal Matched Antibody Pair, PBS Only. Capture antibody: 68154-4-PBS. Detection antibody: 68154-1-PBS. Standard:Ag7127. Range: 0.391-50 ng/mL