

For Research Use Only

# HIBCH Monoclonal antibody

Catalog Number: 68157-1-Ig

Featured Product



## Basic Information

Catalog Number:

68157-1-Ig

Size:

150ul, Concentration: 1000 ug/ml by Nanodrop;

Source:

Mouse

Isotype:

IgG2a

Immunogen Catalog Number:

AG6473

GenBank Accession Number:

BC067822

GeneID (NCBI):

26275

UNIPROT ID:

Q6NVY1

Full Name:

3-hydroxyisobutyryl-Coenzyme A hydrolase

Calculated MW:

43 kDa

Observed MW:

38 kDa

Purification Method:

Protein A purification

CloneNo.:

1B7B8

Recommended Dilutions:

WB 1:5000-1:50000

IF/ICC 1:400-1:1600

## Applications

Tested Applications:

WB, IF/ICC, ELISA

Species Specificity:

human, mouse, rat, pig, rabbit

Positive Controls:

WB : HepG2 cells, Jurkat cells, K-562 cells, pig heart tissue, rabbit heart tissue, rat heart tissue

IF/ICC : HepG2 cells,

## Background Information

HIBCH belongs to the enoyl-CoA hydratase/isomerase family. HIBCH has two isoforms with MW 43 kDa and 38 kDa. It is highly expressed in the liver and kidney, also detected in the heart, muscle and brain (at protein level), but not detected in the lung. Hydrolyzes 3-hydroxyisobutyryl-CoA (HIBYL-CoA), a saline catabolite. Has high activity toward isobutyryl-CoA. Could be an isobutyryl-CoA dehydrogenase that functions in valine catabolism. Also hydrolyzes 3-hydroxypropanoyl-CoA (PMID: 8824301).

## Storage

Storage:

Store at -20°C. Stable for one year after shipment.

Storage Buffer:

PBS with 0.02% sodium azide and 50% glycerol pH 7.3.

Aliquoting is unnecessary for -20°C storage

\*\*\* 20ul sizes contain 0.1% BSA

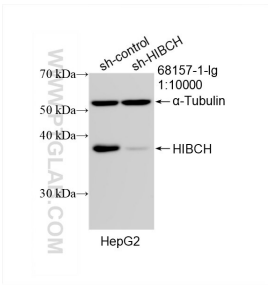
For technical support and original validation data for this product please contact:

T: 1 (888) 4PTGLAB (1-888-478-4522) (toll free in USA), or 1(312) 455-8498 (outside USA)

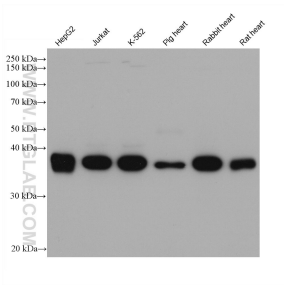
E: [proteintech@ptglab.com](mailto:proteintech@ptglab.com)  
W: [ptglab.com](http://ptglab.com)

This product is exclusively available under Proteintech Group brand and is not available to purchase from any other manufacturer.

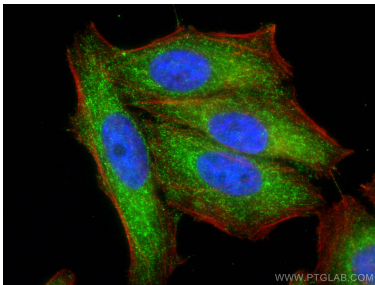
Selected Validation Data



WB result of HIBCH antibody (68157-1-Ig; 1:10000; incubated at room temperature for 1.5 hours) with sh-Control and sh-HIBCH transfected HepG2 cells.



Various lysates were subjected to SDS PAGE followed by western blot with 68157-1-Ig (HIBCH antibody) at dilution of 1:20000 incubated at room temperature for 1.5 hours.



Immunofluorescent analysis of (4% PFA) fixed HepG2 cells using HIBCH antibody (68157-1-Ig, Clone: 1B7B8 ) at dilution of 1:800 and CoraLite®488-Conjugated AffiniPure Goat Anti-Mouse IgG(H+L), CL594-Phalloidin (red).