

For Research Use Only

HIBCH Monoclonal antibody, PBS Only

Catalog Number: 68157-1-PBS

Featured Product



Basic Information

Catalog Number:

68157-1-PBS

Size:

100ug, Concentration: 1mg/ml by Nanodrop;

Source:

Mouse

Isotype:

IgG2a

Immunogen Catalog Number:

AG6473

GenBank Accession Number:

BC067822

GeneID (NCBI):

26275

UNIPROT ID:

Q6NVY1

Full Name:

3-hydroxyisobutyryl-Coenzyme A hydrolase

Calculated MW:

43 kDa

Observed MW:

38 kDa

Purification Method:

Protein A purification

CloneNo.:

1B7B8

Applications

Tested Applications:

WB, IF/ICC, Indirect ELISA

Species Specificity:

human, mouse, rat, pig, rabbit

Background Information

HIBCH belongs to the enoyl-CoA hydratase/isomerase family. HIBCH has two isoforms with MW 43 kDa and 38 kDa. It is highly expressed in the liver and kidney, also detected in the heart, muscle and brain (at protein level), but not detected in the lung. Hydrolyzes 3-hydroxyisobutyryl-CoA (HIBYL-CoA), a saline catabolite. Has high activity toward isobutyryl-CoA. Could be an isobutyryl-CoA dehydrogenase that functions in valine catabolism. Also hydrolyzes 3-hydroxypropanoyl-CoA (PMID: 8824301).

Storage

Storage:

Store at -80°C.

Storage Buffer:

PBS Only

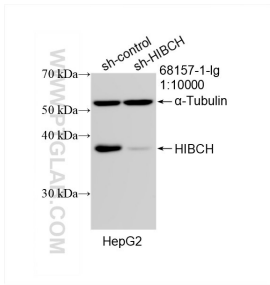
For technical support and original validation data for this product please contact:

T: 1 (888) 4PTGLAB (1-888-478-4522) (toll free in USA), or 1(312) 455-8498 (outside USA)

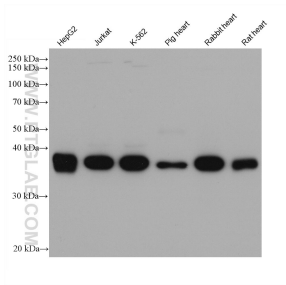
E: proteintech@ptglab.com
W: ptglab.com

This product is exclusively available under Proteintech Group brand and is not available to purchase from any other manufacturer.

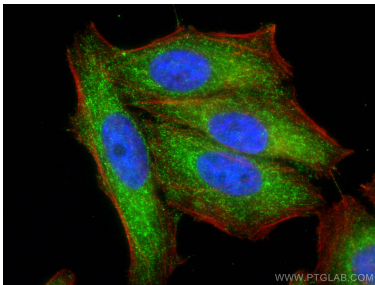
Selected Validation Data



WB result of HIBCH antibody (68157-1-Ig; 1:10000; incubated at room temperature for 1.5 hours) with sh-Control and sh-HIBCH transfected HepG2 cells. This data was developed using the same antibody clone with 68157-1-PBS in a different storage buffer formulation.



Various lysates were subjected to SDS PAGE followed by western blot with 68157-1-Ig (HIBCH antibody) at dilution of 1:20000 incubated at room temperature for 1.5 hours. This data was developed using the same antibody clone with 68157-1-PBS in a different storage buffer formulation.



Immunofluorescent analysis of (4% PFA) fixed HepG2 cells using HIBCH antibody (68157-1-Ig, Clone: 1B7B8) at dilution of 1:800 and CoraLite®488-Conjugated AffiniPure Goat Anti-Mouse IgG(H+L), CL594-Phalloidin (red). This data was developed using the same antibody clone with 68157-1-PBS in a different storage buffer formulation.