

For Research Use Only

ERBB2IP Monoclonal antibody

Catalog Number: 68159-1-Ig **Featured Product**



Basic Information

Catalog Number: 68159-1-Ig	GenBank Accession Number: BC115012	Purification Method: Protein A purification
Size: 150ul , Concentration: 1000 µg/ml by Nanodrop;	GeneID (NCBI): 55914	CloneNo.: 1A8D4
Source: Mouse	Full Name: erbb2 interacting protein	Recommended Dilutions: WB 1:5000-1:50000
Isotype: IgG1	Calculated MW: 1412 aa, 158 kDa	
Immunogen Catalog Number: AG18514	Observed MW: 150-180 kDa	

Applications

Tested Applications: WB, ELISA	Positive Controls: WB : U2OS cells, HSC-T6 cells, HeLa cells, A549 cells, LNCaP cells, MCF-7 cells, HEK-293T cells, Jurkat cells, NIH/3T3 cells
Species Specificity: Human, mouse, rat	

Background Information

ERBB2IP is a cytoplasmic protein that contains leucine-rich repeats (LRR) and PSD95/Dlg1/zo-1 (PDZ) domain (thus named a LAP protein). ERBB2IP interacts, via its single PDZ domain, specifically with ErbB2, but not with ErbB3, ErbB4, or EGFR. It is colocalized with ErbB2 at the basolateral membranes of epithelial cells. In addition, ERBB2IP also interacts with PSD-95, Lano and with three p120-related catenins, eBPAG1 and the β 4 subunit of the α 6 β 4 integrin, two major components of hemidesmosomes. The molecular weight of ERBB2IP was predicted 150-180 kDa by Western Blot (PMID: 25288731, PMID: 24252174, PMID: 19289088)

Storage

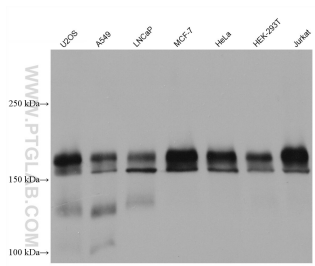
Storage:
Store at -20°C. Stable for one year after shipment.
Storage Buffer:
PBS with 0.02% sodium azide and 50% glycerol pH 7.3.
Aliquoting is unnecessary for -20°C storage

*** 20ul sizes contain 0.1% BSA

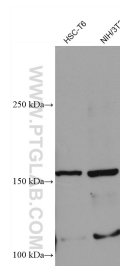
For technical support and original validation data for this product please contact:
T: 1 (888) 4PTGLAB (1-888-478-4522) (toll free in USA), or 1(312) 455-8498 (outside USA)
E: proteintech@ptglab.com
W: ptglab.com

This product is exclusively available under Proteintech Group brand and is not available to purchase from any other manufacturer.

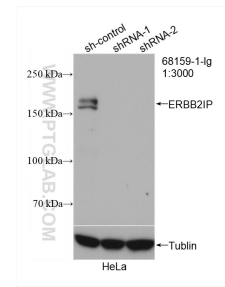
Selected Validation Data



Various lysates were subjected to SDS PAGE followed by western blot with 68159-1-Ig (ERBB2IP antibody) at dilution of 1:10000 incubated at room temperature for 1.5 hours.



Various lysates were subjected to SDS PAGE followed by western blot with 68159-1-Ig (ERBB2IP antibody) at dilution of 1:10000 incubated at room temperature for 1.5 hours.



WB result of ERBB2IP antibody (68159-1-Ig; 1:3000; incubated at room temperature for 1.5 hours) with sh-Control and sh-ERBB2IP transfected HeLa cells.