

For Research Use Only

PPP3CA Monoclonal antibody, PBS Only

Catalog Number: 68163-1-PBS



Basic Information

Catalog Number:

68163-1-PBS

Size:

100ug , Concentration: 1mg/ml by Nanodrop;

Source:

Mouse

Isotype:

IgG2b

Immunogen Catalog Number:

AG32642

GenBank Accession Number:

BC025714

GeneID (NCBI):

5530

UNIPROT ID:

Q08209

Full Name:

protein phosphatase 3 (formerly 2B), catalytic subunit, alpha isoform

Calculated MW:

59 kDa

Observed MW:

59 kDa

Purification Method:

Protein A purification

CloneNo.:

2A5C1

Applications

Tested Applications:

WB, IHC, IP, Indirect ELISA

Species Specificity:

human, mouse, rat, pig, rabbit

Background Information

PPP3CA, also called calcineurin A α , is the only serine/threonine protein phosphatase under the control of Ca²⁺/calmodulin, and plays a critical role in the coupling of Ca²⁺ signals to cellular responses. Ca²⁺ signaling plays a central role in hypertrophic growth of cardiac and skeletal muscle in response to mechanical load and a variety of signals. Therefore, PPP3CA plays an important role in muscle differentiation, especially in muscle fiber type conversion. It is also involved in osteoclast regulation, regulating bone formation through an effect on osteoblast differentiation.

Storage

Storage:

Store at -80°C.

Storage Buffer:

PBS only, pH7.3

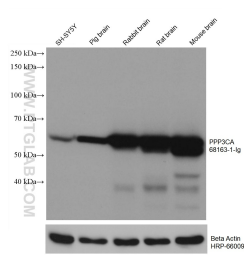
For technical support and original validation data for this product please contact:

T: 1 (888) 4PTGLAB (1-888-478-4522) (toll free in USA), or 1(312) 455-8498 (outside USA)

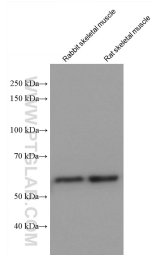
E: proteintech@ptglab.com
W: ptglab.com

This product is exclusively available under Proteintech Group brand and is not available to purchase from any other manufacturer.

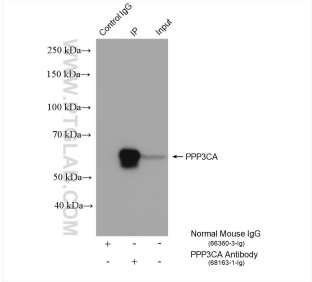
Selected Validation Data



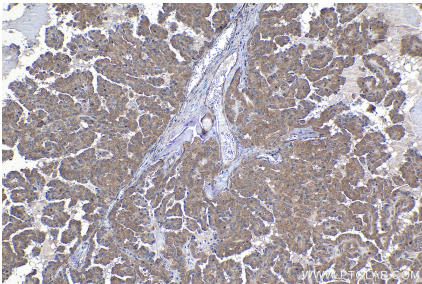
Various lysates were subjected to SDS PAGE followed by western blot with 68163-1-Ig (PPP3CA antibody) at dilution of 1:20000 incubated at room temperature for 1.5 hours. The membrane was stripped and reblotted with HRP-conjugated Beta Actin Monoclonal antibody (HRP-66009) as loading control. This data was developed using the same antibody clone with 68163-1-PBS in a different storage buffer formulation.



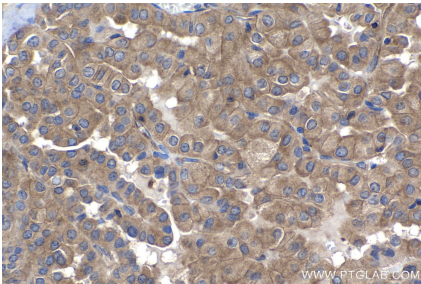
Various lysates were subjected to SDS PAGE followed by western blot with 68163-1-Ig (PPP3CA antibody) at dilution of 1:20000 incubated at room temperature for 1.5 hours. This data was developed using the same antibody clone with 68163-1-PBS in a different storage buffer formulation.



IP result of anti-PPP3CA (IP:68163-1-Ig, 5ug; Detection:68163-1-Ig 1:4000) with rat brain tissue lysate 1120 ug. This data was developed using the same antibody clone with 68163-1-PBS in a different storage buffer formulation.



Immunohistochemical analysis of paraffin-embedded human thyroid cancer tissue slide using 68163-1-Ig (PPP3CA antibody) at dilution of 1:1000 (under 10x lens). Heat mediated antigen retrieval with Tris-EDTA buffer (pH 9.0). This data was developed using the same antibody clone with 68163-1-PBS in a different storage buffer formulation.



Immunohistochemical analysis of paraffin-embedded human thyroid cancer tissue slide using 68163-1-Ig (PPP3CA antibody) at dilution of 1:1000 (under 40x lens). Heat mediated antigen retrieval with Tris-EDTA buffer (pH 9.0). This data was developed using the same antibody clone with 68163-1-PBS in a different storage buffer formulation.