

NIT2 Monoclonal antibody

Catalog Number: 68169-1-Ig

Basic Information

Catalog Number:	GenBank Accession Number:	Purification Method:
68169-1-Ig	BC020620	Protein A purification
Size:	GeneID (NCBI):	CloneNo.:
150ul , Concentration: 1000 µg/ml by Nanodrop;	56954	1E5B1
Source:	Full Name:	Recommended Dilutions:
Mouse	nitrilase family, member 2	WB 1:5000-1:50000
Isotype:	Calculated MW:	IHC 1:200-1:800
IgG2b	276 aa, 31 kDa	IF 1:200-1:800
Immunogen Catalog Number:	Observed MW:	
AG9889	31 kDa	

Applications

Tested Applications:	Positive Controls:
IF, IHC, WB, ELISA	WB : HEK-293 cells, HeLa cells, pig liver tissue, mouse liver tissue, HepG2 cells, Jurkat cells
Species Specificity:	IHC : human kidney tissue,
Human, mouse, rat, pig	IF : U-251 cells,
Note-IHC: suggested antigen retrieval with TE buffer pH 9.0; (*) Alternatively, antigen retrieval may be performed with citrate buffer pH 6.0	

Background Information

NIT2 belongs to a branch of the nitrilase superfamily of enzymes that cleave carbon-nitrogen bonds. NIT2 functions as an omega-amidase and catalyzes hydrolysis of alpha-ketoglutarate, forming alpha-ketoglutarate and ammonia. This reaction is also functionally coupled with a subset of transaminases that reaminate the keto acid analogs of some essential amino acids, most particularly methionine and phenylalanine.

Storage

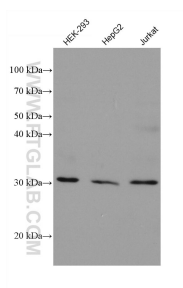
Storage:
Store at -20°C. Stable for one year after shipment.
Storage Buffer:
PBS with 0.02% sodium azide and 50% glycerol pH 7.3.
Aliquoting is unnecessary for -20°C storage

*** 20ul sizes contain 0.1% BSA

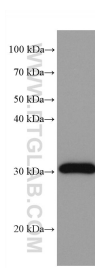
For technical support and original validation data for this product please contact:
T: 1 (888) 4PTGLAB (1-888-478-4522) (toll free in USA), or 1(312) 455-8498 (outside USA)
E: proteintech@ptglab.com
W: ptglab.com

This product is exclusively available under Proteintech Group brand and is not available to purchase from any other manufacturer.

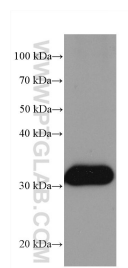
Selected Validation Data



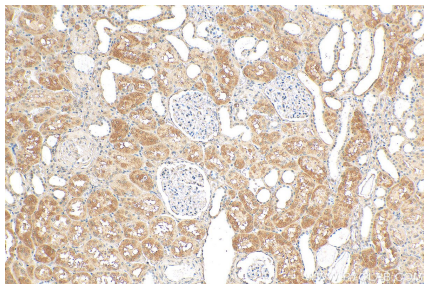
Various lysates were subjected to SDS PAGE followed by western blot with 68169-1-Ig (NIT2 antibody) at dilution of 1:20000 incubated at room temperature for 1.5 hours.



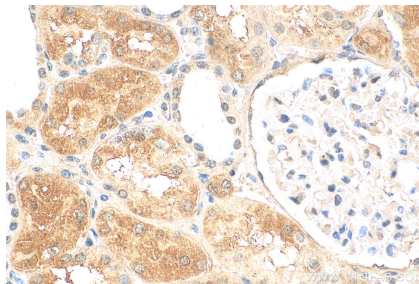
pig liver tissue were subjected to SDS PAGE followed by western blot with 68169-1-Ig (NIT2 antibody) at dilution of 1:20000 incubated at room temperature for 1.5 hours.



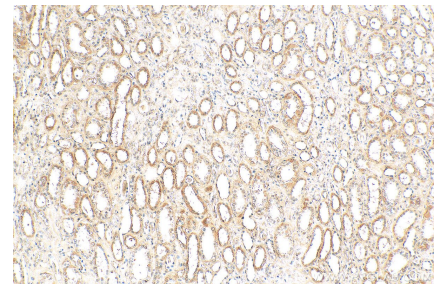
rat liver tissue were subjected to SDS PAGE followed by western blot with 68169-1-Ig (NIT2 antibody) at dilution of 1:20000 incubated at room temperature for 1.5 hours.



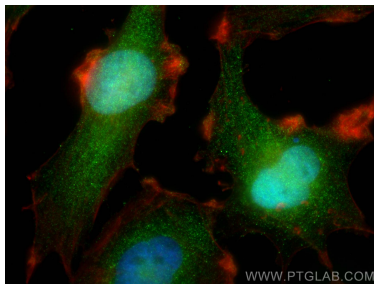
Immunohistochemical analysis of paraffin-embedded human kidney tissue slide using 68169-1-Ig (NIT2 antibody) at dilution of 1:400 (under 10x lens). Heat mediated antigen retrieval with Tris-EDTA buffer (pH 9.0).



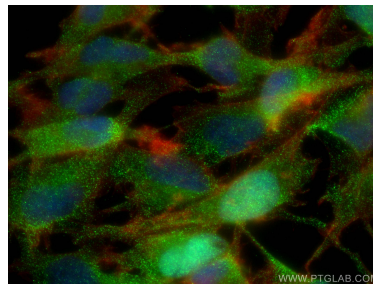
Immunohistochemical analysis of paraffin-embedded human kidney tissue slide using 68169-1-Ig (NIT2 antibody) at dilution of 1:400 (under 40x lens). Heat mediated antigen retrieval with Tris-EDTA buffer (pH 9.0).



Immunohistochemical analysis of paraffin-embedded human kidney tissue slide using 68169-1-Ig (NIT2 antibody) at dilution of 1:400 (under 10x lens). Heat mediated antigen retrieval with Tris-EDTA buffer (pH 9.0).



Immunofluorescent analysis of (4% PFA) fixed U-251 cells using NIT2 antibody (68169-1-Ig, Clone: 1E5B1) at dilution of 1:400 and CoraLite®488-Conjugated AffiniPure Goat Anti-Mouse IgG(H+L), CL594-Phalloidin (red).



Immunofluorescent analysis of (4% PFA) fixed U-251 cells using NIT2 antibody (68169-1-Ig, Clone: 1E5B1) at dilution of 1:400 and CoraLite®488-Conjugated AffiniPure Goat Anti-Mouse IgG(H+L), CL594-Phalloidin (red).