

For Research Use Only

GPD2 Monoclonal antibody, PBS Only (Detector)

Catalog Number: 68174-1-PBS



Basic Information

Catalog Number: 68174-1-PBS	GenBank Accession Number: BC019874	Purification Method: Protein G purification
Size: 100ug , Concentration: 1mg/ml by Nanodrop;	GeneID (NCBI): 2820	CloneNo.: 1C12E2
Source: Mouse	UNIPROT ID: P43304	
Isotype: IgG1	Full Name: glycerol-3-phosphate dehydrogenase 2 (mitochondrial)	
Immunogen Catalog Number: AG11212	Calculated MW: 41 kDa, 81 kDa	

Applications

Tested Applications:
WB, Cytometric bead array, Indirect ELISA

Species Specificity:
human, mouse, rat

Product Information

68174-1-PBS targets GPD2 as part of a matched antibody pair:

MP50432-1: 68174-2-PBS capture and 68174-1-PBS detection (validated in Cytometric bead array)

Unconjugated mouse monoclonal antibody pair in PBS only (BSA and azide free) storage buffer at a concentration of 1 mg/mL, ready for conjugation.

This conjugation ready format makes antibodies ideal for use in many applications including: ELISAs, multiplex assays requiring matched pairs, mass cytometry, and multiplex imaging applications. Antibody use should be optimized by the end user for each application and assay.

Background Information

GPD2(Glycerol-3-phosphate dehydrogenase, mitochondrial) belongs to the FAD-dependent glycerol-3-phosphate dehydrogenase family. It is phosphorylated only in capacitated hamster spermatozoa and is noncanonically localized in the acrosome and principal piece in human, mouse, rat, and hamster spermatozoa, though in somatic cells it is localized in the mitochondria. This noncanonical localization may imply a role of GPD2 in acrosome reaction and hyperactivation(PMID:19333995).

Storage

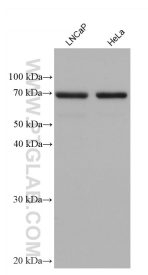
Storage:
Store at -80°C.

Storage Buffer:
PBS Only

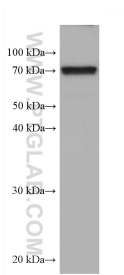
For technical support and original validation data for this product please contact:
T: 1 (888) 4PTGLAB (1-888-478-4522) (toll free in USA), or 1(312) 455-8498 (outside USA)
E: proteintech@ptglab.com
W: ptglab.com

This product is exclusively available under Proteintech Group brand and is not available to purchase from any other manufacturer.

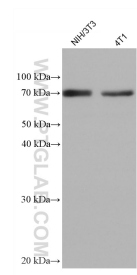
Selected Validation Data



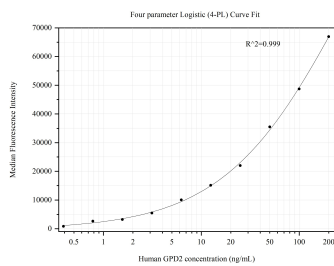
Various lysates were subjected to SDS PAGE followed by western blot with 68174-1-Ig (GPD2 antibody) at dilution of 1:10000 incubated at room temperature for 1.5 hours. This data was developed using the same antibody clone with 68174-1-PBS in a different storage buffer formulation.



HSC-T6 cells were subjected to SDS PAGE followed by western blot with 68174-1-Ig (GPD2 antibody) at dilution of 1:10000 incubated at room temperature for 1.5 hours. This data was developed using the same antibody clone with 68174-1-PBS in a different storage buffer formulation.



Various lysates were subjected to SDS PAGE followed by western blot with 68174-1-Ig (GPD2 antibody) at dilution of 1:10000 incubated at room temperature for 1.5 hours. This data was developed using the same antibody clone with 68174-1-PBS in a different storage buffer formulation.



Cytometric bead array standard curve of MP50432-1, GPD2 Monoclonal Matched Antibody Pair, PBS Only. Capture antibody: 68174-2-PBS. Detection antibody: 68174-1-PBS. Standard:Ag11212. Range: 0.391-200 ng/mL.