

For Research Use Only

ENOPH1 Monoclonal antibody

Catalog Number: 68179-1-Ig



Basic Information

Catalog Number: 68179-1-Ig	GenBank Accession Number: BC065815	Purification Method: Protein G purification
Size: 150ul , Concentration: 1000 ug/ml by Nanodrop;	GeneID (NCBI): 58478	CloneNo.: 1F1E11
Source: Mouse	UNIPROT ID: Q9UHY7	Recommended Dilutions: WB 1:5000-1:50000
Isotype: IgG1	Full Name: enolase-phosphatase 1	
Immunogen Catalog Number: AG12553	Calculated MW: 261 aa, 29 kDa	
	Observed MW: 29-35 kDa	

Applications

Tested Applications:

WB, ELISA, FC (Intra)

Species Specificity:

Human, Mouse, Rat, Rabbit, Pig

Positive Controls:

WB : LNCaP cells, HeLa cells, HepG2 cells, Jurkat cells, pig brain tissue, rabbit brain tissue, rat brain tissue, mouse brain tissue

Background Information

ENOPH1, also named as MASA and MSTP145, belongs to the HAD-like hydrolase superfamily and MasA/MtnC family. ENOPH1 is a newly identified enzyme involved in L-methionine biosynthesis, which is associated with anxiety and depression. Studies have shown that ENOPH1 plays a crucial role in promoting the proliferation and migration of glioma cells (PMID: 32654229). ENOPH1 has 2 isoforms with the molecular mass of 13 and 29 kDa.

Storage

Storage:

Store at -20°C. Stable for one year after shipment.

Storage Buffer:

PBS with 0.02% sodium azide and 50% glycerol pH 7.3.

Aliquoting is unnecessary for -20°C storage

*** 20ul sizes contain 0.1% BSA

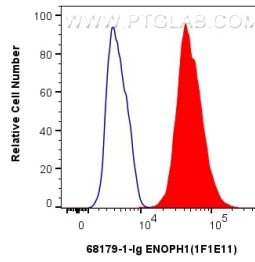
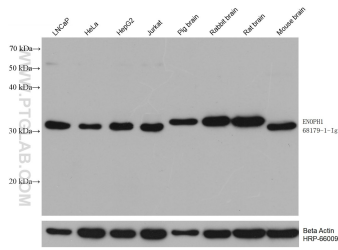
For technical support and original validation data for this product please contact:

T: 1 (888) 4PTGLAB (1-888-478-4522) (toll free in USA), or 1(312) 455-8498 (outside USA)

E: proteintech@ptglab.com
W: ptglab.com

This product is exclusively available under Proteintech Group brand and is not available to purchase from any other manufacturer.

Selected Validation Data



Various lysates were subjected to SDS PAGE followed by western blot with 68179-1-Ig (ENOPH1 antibody) at dilution of 1:20000 incubated at room temperature for 1.5 hours. The membrane was stripped and reblotted with HRP-conjugated Beta Actin Monoclonal antibody (HRP-66009) as loading control.

1×10^6 HepG2 cells were intracellularly stained with 0.4 μ g ENOPH1 Monoclonal antibody (68179-1-Ig, Clone:1F1E11) and CoraLite[®]488-Conjugated AffiniPure Goat Anti-Mouse IgG(H+L) (SA00013-1) (red), or 0.4 μ g Mouse IgG1 isotype control Mouse McAb (66360-1-Ig, Clone: 1F8D3) (blue). Cells were fixed with 4% PFA and permeabilized with Flow Cytometry Perm Buffer (PF00011-C).