

For Research Use Only

COMT Monoclonal antibody

Catalog Number: 68181-1-Ig



Basic Information

Catalog Number: 68181-1-Ig	GenBank Accession Number: BC000419	Purification Method: Protein G purification
Size: 150ul , Concentration: 1000 µg/ml by Nanodrop;	GeneID (NCBI): 1312	CloneNo.: 1A1A4
Source: Mouse	Full Name: catechol-O-methyltransferase	Recommended Dilutions: WB 1:5000-1:50000
Isotype: IgG1	Calculated MW: 30 kDa	
Immunogen Catalog Number: AG6502	Observed MW: 28-30 kDa	

Applications

Tested Applications:

FC, WB, ELISA

Species Specificity:

Human, pig, rat, mouse

Positive Controls:

WB : HeLa cells, HEK-293 cells, HepG2 cells, K-562 cells, pig adrenal gland tissue, human testis tissue, rat testis tissue, mouse testis tissue

Background Information

Catechol O-methyltransferase (COMT) is an important enzyme that catalyzes O-methylation and inactivation of metabolically active catechol-containing bioactive molecules and drugs. The mammalian COMT enzyme exists in soluble form (24-26 kDa) and membrane-bound form (28-30 kDa), which are encoded by a single gene utilizing different promoters.

Storage

Storage:

Store at -20°C. Stable for one year after shipment.

Storage Buffer:

PBS with 0.02% sodium azide and 50% glycerol pH 7.3.

Aliquoting is unnecessary for -20°C storage

*** 20ul sizes contain 0.1% BSA

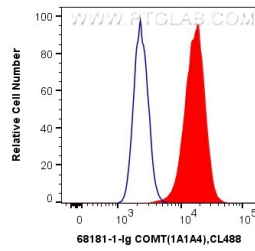
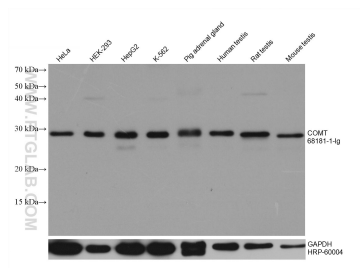
For technical support and original validation data for this product please contact:

T: 1 (888) 4PTGLAB (1-888-478-4522) (toll free
in USA), or 1(312) 455-8498 (outside USA)

E: proteintech@ptglab.com
W: ptglab.com

This product is exclusively available under Proteintech Group brand and is not available to purchase from any other manufacturer.

Selected Validation Data



Various lysates were subjected to SDS PAGE followed by western blot with 68181-1-Ig (COMT antibody) at dilution of 1:10000 and incubated at room temperature for 1.5 hours. The membrane was stripped and reblotted with HRP-conjugated GAPDH Monoclonal antibody (HRP-60004) as loading control.

1×10^6 HepG2 cells were intracellularly stained with 0.4 μ g Anti-Human COMT (68181-1-Ig, Clone:1A1A4) and CoraLite@488-Conjugated AffiniPure Goat Anti-Mouse IgG(H+L) at dilution 1:1000 (red), or 0.4 μ g Control Antibody. Cells were fixed with 4% PFA and permeabilized with Flow Cytometry Perm Buffer (PF00011-C).