

For Research Use Only

NSFL1C Monoclonal antibody

Catalog Number: 68182-1-Ig



Basic Information

Catalog Number: 68182-1-Ig	GenBank Accession Number: BC002801	Purification Method: Protein G purification
Size: 150ul , Concentration: 1000 ug/ml by Nanodrop;	GeneID (NCBI): 55968	CloneNo.: 1F12E12
Source: Mouse	UNIPROT ID: Q9UNZ2	Recommended Dilutions: WB 1:5000-1:50000 IHC 1:500-1:2000 IF/ICC 1:400-1:1600
Isotype: IgG1	Full Name: NSFL1 (p97) cofactor (p47)	
Immunogen Catalog Number: AG8040	Calculated MW: 41 kDa	
	Observed MW: 41 kDa	

Applications

Tested Applications: WB, IHC, IF/ICC, ELISA	Positive Controls:
Species Specificity: Human, Mouse, Rat, Pig	WB : rat brain tissue, U2OS cells, mouse brain tissue, A549 cells, A431 cells, LNCaP cells, HeLa cells, Jurkat cells, pig brain tissue
Note-IHC: <i>suggested antigen retrieval with TE buffer pH 9.0; (*) Alternatively, antigen retrieval may be performed with citrate buffer pH 6.0</i>	IHC : human lung cancer tissue,
	IF/ICC : A431 cells,

Storage

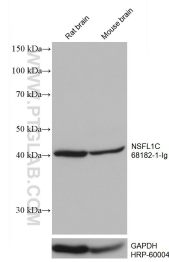
Storage:
Store at -20°C. Stable for one year after shipment.
Storage Buffer:
PBS with 0.02% sodium azide and 50% glycerol pH 7.3.
Aliquoting is unnecessary for -20°C storage

*** 20ul sizes contain 0.1% BSA

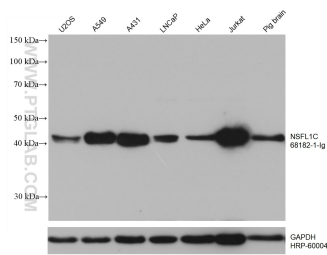
For technical support and original validation data for this product please contact:
T: 1 (888) 4PTGLAB (1-888-478-4522) (toll free in USA), or 1(312) 455-8498 (outside USA)
E: proteintech@ptglab.com
W: ptglab.com

This product is exclusively available under Proteintech Group brand and is not available to purchase from any other manufacturer.

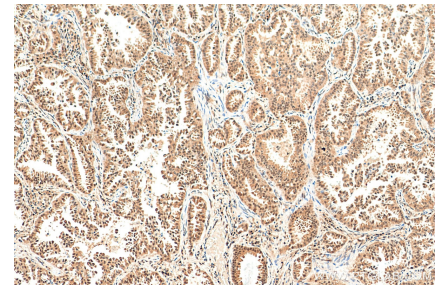
Selected Validation Data



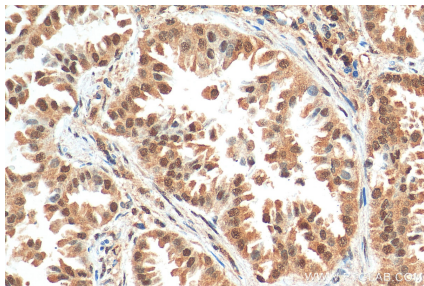
Various lysates were subjected to SDS PAGE followed by western blot with 68182-1-Ig (NSFL1C antibody) at dilution of 1:10000 incubated at room temperature for 1.5 hours. The membrane was stripped and reblotted with HRP-conjugated GAPDH Monoclonal antibody (HRP-60004) as loading control.



Various lysates were subjected to SDS PAGE followed by western blot with 68182-1-Ig (NSFL1C antibody) at dilution of 1:10000 incubated at room temperature for 1.5 hours. The membrane was stripped and reblotted with HRP-conjugated GAPDH Monoclonal antibody (HRP-60004) as loading control.



Immunohistochemical analysis of paraffin-embedded human lung cancer tissue slide using 68182-1-Ig (NSFL1C antibody) at dilution of 1:1000 (under 10x lens). Heat mediated antigen retrieval with Tris-EDTA buffer (pH 9.0).



Immunohistochemical analysis of paraffin-embedded human lung cancer tissue slide using 68182-1-Ig (NSFL1C antibody) at dilution of 1:1000 (under 40x lens). Heat mediated antigen retrieval with Tris-EDTA buffer (pH 9.0).



Immunofluorescent analysis of (4% PFA) fixed A431 cells using NSFL1C antibody (68182-1-Ig, Clone: 1F12E12) at dilution of 1:800 and CoraLite® 488-Conjugated Goat Anti-Mouse IgG(H+L), CL594-Phalloidin (red).