

For Research Use Only

# TCP1 Monoclonal antibody

Catalog Number: 68183-1-Ig



## Basic Information

<b>Catalog Number:</b> 68183-1-Ig	<b>GenBank Accession Number:</b> BC000665	<b>Purification Method:</b> Protein G purification
<b>Size:</b> 150ul , Concentration: 1000 µg/ml by Nanodrop;	<b>GeneID (NCBI):</b> 6950	<b>CloneNo.:</b> 2C2F6
<b>Source:</b> Mouse	<b>Full Name:</b> t-complex 1	<b>Recommended Dilutions:</b> WB 1:5000-1:50000 IF 1:400-1:1600
<b>Isotype:</b> IgG1	<b>Calculated MW:</b> 60 kDa	
<b>Immunogen Catalog Number:</b> AG0389	<b>Observed MW:</b> 55-60 kDa	

## Applications

<b>Tested Applications:</b> FC, IF, WB, ELISA	<b>Positive Controls:</b>
<b>Species Specificity:</b> Human	<b>WB :</b> LNCaP cells, HeLa cells, HEK-293 cells, HepG2 cells, Jurkat cells, K-562 cells
	<b>IF :</b> HeLa cells,

## Background Information

### Storage

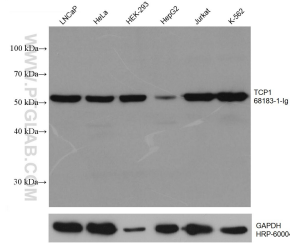
**Storage:**  
Store at -20°C. Stable for one year after shipment.  
**Storage Buffer:**  
PBS with 0.02% sodium azide and 50% glycerol pH 7.3.  
Aliquoting is unnecessary for -20°C storage

\*\*\* 20ul sizes contain 0.1% BSA

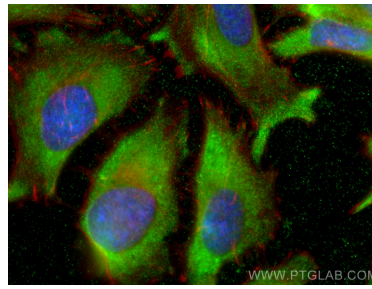
For technical support and original validation data for this product please contact:  
T: 1 (888) 4PTGLAB (1-888-478-4522) (toll free in USA), or 1(312) 455-8498 (outside USA)  
E: proteintech@ptglab.com  
W: ptglab.com

This product is exclusively available under Proteintech Group brand and is not available to purchase from any other manufacturer.

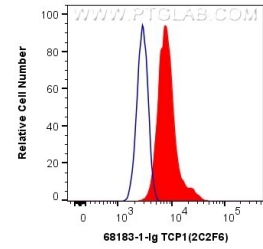
## Selected Validation Data



Various lysates were subjected to SDS PAGE followed by western blot with 68183-1-Ig (TCP1 antibody) at dilution of 1:10000 incubated at room temperature for 1.5 hours. The membrane was stripped and reblotted with HRP-conjugated GAPDH Monoclonal antibody (HRP-60004) as loading control.



Immunofluorescent analysis of (-20°C Ethanol) fixed HeLa cells using TCP1 antibody (68183-1-Ig, Clone: 2C2F6) at dilution of 1:800 and CoraLite®488-Conjugated AffiniPure Goat Anti-Mouse IgG(H+L), CL594-Phalloidin (red).



1X10<sup>6</sup> HeLa cells were intracellularly stained with 0.4 ug Anti-Human TCP1 (68183-1-Ig, Clone:2C2F6) and CoraLite®488-Conjugated AffiniPure Goat Anti-Mouse IgG(H+L) at dilution 1:1000 (red), or 0.4 ug Mouse IgG1 Isotype Control (MOPC-21) (65124-1-Ig, Clone: MOPC-21) (blue). Cells were fixed with 4% PFA and permeabilized with Flow Cytometry Perm Buffer (PF00011-C).