

For Research Use Only

# ARL8A/ARL8B Monoclonal antibody, PBS Only



Catalog Number: 68186-1-PBS

## Basic Information

<b>Catalog Number:</b> 68186-1-PBS	<b>GenBank Accession Number:</b> BC015408	<b>Purification Method:</b> Protein A purification
<b>Size:</b> 100ug , Concentration: 1 mg/ml by Nanodrop;	<b>GeneID (NCBI):</b> 127829	<b>CloneNo.:</b> 2F4C3
<b>Source:</b> Mouse	<b>UNIPROT ID:</b> Q96BM9	
<b>Isotype:</b> IgG2a	<b>Full Name:</b> ADP-ribosylation factor-like 8A	
<b>Immunogen Catalog Number:</b> AG10758	<b>Calculated MW:</b> 186 aa, 21 kDa	
	<b>Observed MW:</b> 18 kDa, 21 kDa	

## Applications

**Tested Applications:**  
WB, Indirect ELISA

**Species Specificity:**  
Human, mouse, rat, rabbit

## Background Information

ARL8A (ADP-ribosylation factor-like protein 8A) is also named as ARL10B, GIE2 and belongs to the small GTPase superfamily. ARL8A is localized to lysosomes in mammalian cells (PMID: 16537643). In neurons, ARL8A mediates the anterograde axonal long-range transport of presynaptic lysosome-related vesicles that are required for presynaptic biogenesis and synaptic function. ARL8A is upregulated in many cancers such as endometrial cancer (PMID: 32070877), colorectal cancer (PMID: 30546056) and inflammatory breast cancer (PMID: 27648361), and has been associated with poor survival outcomes. ARL8A/ARL8B can be recognized by this antibody.

## Storage

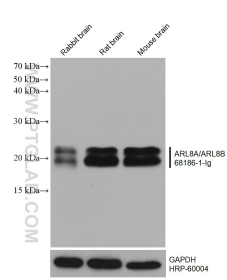
**Storage:**  
Store at -80°C.

**Storage Buffer:**  
PBS Only

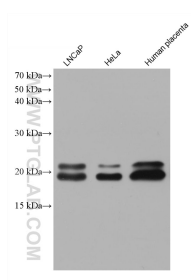
For technical support and original validation data for this product please contact:  
T: 1 (888) 4PTGLAB (1-888-478-4522) (toll free in USA), or 1(312) 455-8498 (outside USA)  
E: [proteintech@ptglab.com](mailto:proteintech@ptglab.com)  
W: [ptglab.com](http://ptglab.com)

This product is exclusively available under Proteintech Group brand and is not available to purchase from any other manufacturer.

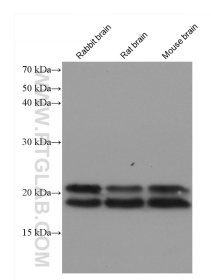
## Selected Validation Data



Various lysates were subjected to SDS PAGE followed by western blot with 68186-1-Ig (ARL8A/ARL8B antibody) at dilution of 1:20000 incubated at room temperature for 1.5 hours. The membrane was stripped and reblotted with HRP-conjugated GAPDH Monoclonal antibody (HRP-60004) as loading control. This data was developed using the same antibody clone with 68186-1-PBS in a different storage buffer formulation.



Various lysates were subjected to SDS PAGE followed by western blot with 68186-1-Ig (ARL8A/ARL8B antibody) at dilution of 1:20000 incubated at room temperature for 1.5 hours. This data was developed using the same antibody clone with 68186-1-PBS in a different storage buffer formulation.



Various lysates were subjected to SDS PAGE followed by western blot with 68186-1-Ig (ARL8A antibody) at dilution of 1:10000 incubated at room temperature for 1.5 hours. This data was developed using the same antibody clone with 68186-1-PBS in a different storage buffer formulation.