

For Research Use Only

PHF5A Monoclonal antibody, PBS Only



Catalog Number: 68196-1-PBS

Basic Information

Catalog Number: 68196-1-PBS	GenBank Accession Number: BC007321	Purification Method: Protein G purification
Size: 100ug , Concentration: 1 mg/ml by Nanodrop;	GeneID (NCBI): 84844	CloneNo.: 1G7E2
Source: Mouse	UNIPROT ID: Q7RTV0	
Isotype: IgG1	Full Name: PHD finger protein 5A	
Immunogen Catalog Number: AG7804	Calculated MW: 12 kDa	
	Observed MW: 12 kDa	

Applications

Tested Applications:
WB, Indirect ELISA

Species Specificity:
Human, mouse

Background Information

The PHD finger-like domain protein 5a (PHF5A) is ubiquitously expressed and is located in the nucleus. The gene Phf5a and its human counterpart PHF5A (former name Ini) are located on rat chromosome 7 (RNO7q34) and human chromosome 22 (HSA2213q2), respectively. The rat gene consists of four exons, while the human gene have five exons. Both genes encode a highly conserved protein of 110 amino acids that contains a PHD finger domain.(PMID: 23675859) It acts as a transcriptional regulator by binding to the GJA1/Cx43 promoter and enhancing its up-regulation by ESR1/ER-alpha and is involved in pre-mRNA splicing.

Storage

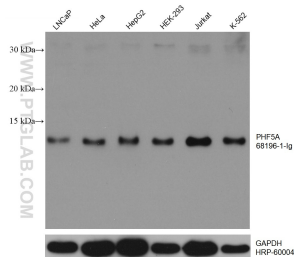
Storage:
Store at -80°C.

Storage Buffer:
PBS Only

For technical support and original validation data for this product please contact:
T: 1 (888) 4PTGLAB (1-888-478-4522) (toll free in USA), or 1(312) 455-8498 (outside USA)
E: proteintech@ptglab.com
W: ptglab.com

This product is exclusively available under Proteintech Group brand and is not available to purchase from any other manufacturer.

Selected Validation Data



Various lysates were subjected to SDS PAGE followed by western blot with 68196-1-Ig (PHF5A antibody) at dilution of 1:10000 incubated at room temperature for 1.5 hours. The membrane was stripped and reblotted with HRP-conjugated GAPDH Monoclonal antibody (HRP-60004) as loading control. This data was developed using the same antibody clone with 68196-1-PBS in a different storage buffer formulation.