

For Research Use Only

VPS25 Monoclonal antibody

Catalog Number: 68197-1-Ig



Basic Information

Catalog Number: 68197-1-Ig	GenBank Accession Number: BC006282	Purification Method: Protein G purification
Size: 150ul , Concentration: 1000 µg/ml by Nanodrop;	GeneID (NCBI): 84313	CloneNo.: 3B4C3
Source: Mouse	Full Name: vacuolar protein sorting 25 homolog (S. cerevisiae)	Recommended Dilutions: WB 1:5000-1:50000
Isotype: IgG1	Calculated MW: 176 aa, 21 kDa	
Immunogen Catalog Number: AG8243	Observed MW: 19 kDa	

Applications

Tested Applications:

WB, ELISA

Species Specificity:

Human, Rabbit

Positive Controls:

WB : HEK-293 cells, HeLa cells, rabbit kidney tissue, HepG2 cells, Jurkat cells

Background Information

VPS25 is a component of the endosome-associated complex ESCRT-II (Endosomal Sorting Complexes Required for Transport protein II). ESCRT-II complex, composed of VPS25, VPS36, and SNF8, functions in sorting of ubiquitinated membrane proteins during endocytosis. ESCRT-II complex is probably involved in the recruitment of the ESCRT-III complex. VPS25 is highly conserved. Human VPS25 gene maps to chromosome 17q21.31 and is expressed in a wide range of tissues (PMID: 16889659).

Storage

Storage:

Store at -20°C. Stable for one year after shipment.

Storage Buffer:

PBS with 0.02% sodium azide and 50% glycerol pH 7.3.

Aliquoting is unnecessary for -20°C storage

*** 20ul sizes contain 0.1% BSA

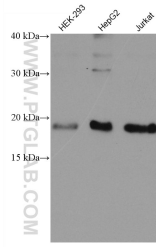
For technical support and original validation data for this product please contact:

T: 1 (888) 4PTGLAB (1-888-478-4522) (toll free in USA), or 1(312) 455-8498 (outside USA)

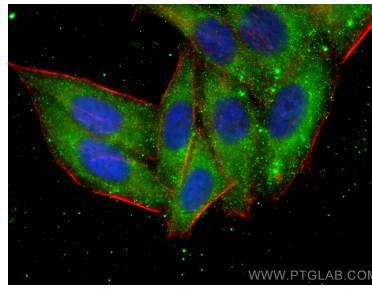
E: proteintech@ptglab.com
W: ptglab.com

This product is exclusively available under Proteintech Group brand and is not available to purchase from any other manufacturer.

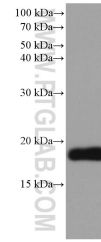
Selected Validation Data



Various lysates were subjected to SDS PAGE followed by western blot with 68197-1-Ig (VPS25 antibody) at dilution of 1:10000 incubated at room temperature for 1.5 hours.



Immunofluorescent analysis of (-20°C Ethanol) fixed HepG2 cells using VPS25 antibody (68197-1-Ig, Clone: 3B4C3) at dilution of 1:800 and CoraLite®488-Conjugated AffiniPure Goat Anti-Mouse IgG(H+L), CL594-Phalloidin (red).



rabbit kidney tissue were subjected to SDS PAGE followed by western blot with 68197-1-Ig (VPS25 antibody) at dilution of 1:5000 incubated at room temperature for 1.5 hours.