

For Research Use Only

# CSNK2A1 Monoclonal antibody

Catalog Number: 68200-1-Ig

Featured Product

1 Publications



## Basic Information

Catalog Number:

68200-1-Ig

Size:

150ul, Concentration: 1000 ug/ml by Nanodrop;

Source:

Mouse

Isotype:

IgG1

Immunogen Catalog Number:

AG29062

GenBank Accession Number:

BC011668

GeneID (NCBI):

1457

UNIPROT ID:

P68400

Full Name:

casein kinase 2, alpha 1 polypeptide

Calculated MW:

45 kDa

Observed MW:

40-45 kDa

Purification Method:

Protein G purification

CloneNo.:

1D5E8

Recommended Dilutions:

WB: 1:5000-1:50000

IF/ICC: 1:750-1:3000

## Applications

Tested Applications:

WB, IF/ICC, ELISA

Cited Applications:

WB, IP

Species Specificity:

human, rabbit

Cited Species:

human

Positive Controls:

WB: LNCaP cells, A549 cells, rabbit heart tissue, HeLa cells, HEK-293 cells, HepG2 cells, Jurkat cells, MOLT-4 cells, K-562 cells, HL-60 cells

IF/ICC: A431 cells, HepG2 cells

## Background Information

CSNK2A1 (Casein kinase II subunit alpha) is also named as CK2A1 and belongs to the CK2 subfamily. The CSNK2A1 gene contains 8 exons whose sequences comprise bases 102 to 824 of the coding region of the human casein kinase II alpha subunit. Casein kinase II is a ubiquitous protein-serine/threonine kinase in eukaryotic cells that catalyzes the phosphorylation of many protein substrates and has been regarded as a second-messenger-independent protein kinase. This enzyme is composed of an  $\alpha$  subunit (37 to 44 kDa) and a  $\beta$  subunit (24 to 28 kDa) and exists as an  $\alpha_2\beta_2$  tetramer (PMID:1448100). Casein kinase 2 has been found to be increased at protein level and up-regulated at the level of enzyme activity in the majority of cancers. However, elevated levels of casein kinase 2 are present in certain normal organs such as brain and testes.

## Notable Publications

Author	Pubmed ID	Journal	Application
Riham Ayoubi	39403680	F1000Res	WB, IP

## Storage

Storage:

Store at -20°C. Stable for one year after shipment.

Storage Buffer:

PBS with 0.02% sodium azide and 50% glycerol, pH7.3

Aliquoting is unnecessary for -20°C storage

\*\*\* 20ul sizes contain 0.1% BSA

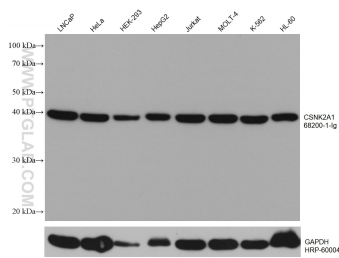
For technical support and original validation data for this product please contact:

T: 1 (888) 4PTGLAB (1-888-478-4522) (toll free in USA), or 1(312) 455-8498 (outside USA)

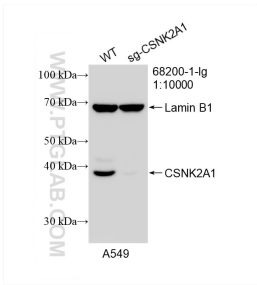
E: [proteintech@ptglab.com](mailto:proteintech@ptglab.com)  
W: [ptglab.com](http://ptglab.com)

This product is exclusively available under Proteintech Group brand and is not available to purchase from any other manufacturer.

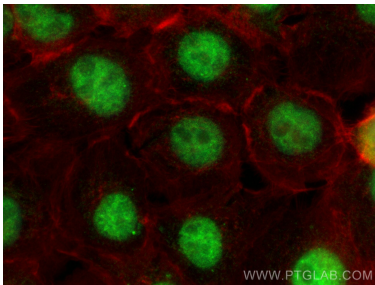
Selected Validation Data



Various lysates were subjected to SDS PAGE followed by western blot with 68200-1-Ig (CSNK2A1 antibody) at dilution of 1:20000 incubated at room temperature for 1.5 hours. The membrane was stripped and reblotted with HRP-conjugated GAPDH Monoclonal antibody (HRP-60004) as loading control.



WB result of CSNK2A1 antibody (68200-1-Ig; 1:10000; room temperature for 1.5 hours) with wild-type and sg-CSNK2A1 transfected A549 cells.



Immunofluorescent analysis of (4% PFA) fixed A431 cells using CSNK2A1 antibody (68200-1-Ig, Clone: 1D5E8 ) at dilution of 1:1500 and CoraLite®488-Conjugated AffiniPure Goat Anti-Mouse IgG(H+L) (SA00013-1), CL594-Phalloidin (red).