

For Research Use Only

# PSMA4 Monoclonal antibody

Catalog Number: 68203-1-Ig



## Basic Information

<b>Catalog Number:</b> 68203-1-Ig	<b>GenBank Accession Number:</b> BC056249	<b>Purification Method:</b> Protein A purification
<b>Size:</b> 150ul , Concentration: 1000 ug/ml by Nanodrop;	<b>GeneID (NCBI):</b> 5685	<b>CloneNo.:</b> 2E6E4
<b>Source:</b> Mouse	<b>UNIPROT ID:</b> P25789	<b>Recommended Dilutions:</b> WB 1:5000-1:50000 IHC 1:1000-1:4000 IF/ICC 1:200-1:800
<b>Isotype:</b> IgG2b	<b>Full Name:</b> proteasome (prosome, macropain) subunit, alpha type, 4	
<b>Immunogen Catalog Number:</b> AG32626	<b>Calculated MW:</b> 237 aa, 27 kDa	
	<b>Observed MW:</b> 29 kDa	

## Applications

<b>Tested Applications:</b> WB, IHC, IF/ICC, ELISA	<b>Positive Controls:</b>
<b>Species Specificity:</b> Human, Pig, Rabbit, Rat, Mouse	<b>WB :</b> LNCaP cells, HeLa cells, K-562 cells, Pig heart, Rabbit heart, Rat heart, Mouse heart
<b>Note-IHC: suggested antigen retrieval with TE buffer pH 9.0; (*) Alternatively, antigen retrieval may be performed with citrate buffer pH 6.0</b>	<b>IHC :</b> human pancreas cancer tissue,
	<b>IF/ICC :</b> HeLa cells,

## Storage

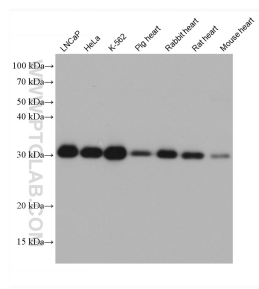
**Storage:**  
Store at -20°C. Stable for one year after shipment.  
**Storage Buffer:**  
PBS with 0.02% sodium azide and 50% glycerol pH 7.3.  
Aliquoting is unnecessary for -20°C storage

\*\*\* 20ul sizes contain 0.1% BSA

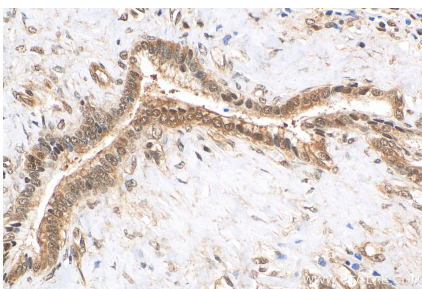
For technical support and original validation data for this product please contact:  
T: 1 (888) 4PTGLAB (1-888-478-4522) (toll free in USA), or 1(312) 455-8498 (outside USA)  
E: [proteintech@ptglab.com](mailto:proteintech@ptglab.com)  
W: [ptglab.com](http://ptglab.com)

This product is exclusively available under Proteintech Group brand and is not available to purchase from any other manufacturer.

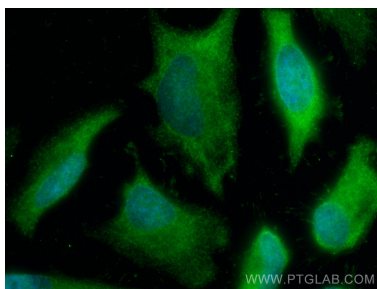
## Selected Validation Data



Various lysates were subjected to SDS PAGE followed by western blot with 68203-1-Ig (PSMA4 antibody) at dilution of 1:20000 incubated at room temperature for 1.5 hours.



Immunohistochemical analysis of paraffin-embedded human pancreas cancer tissue slide using 68203-1-Ig (PSMA4 antibody) at dilution of 1:2000 (under 40x lens). Heat mediated antigen retrieval with Tris-EDTA buffer (pH 9.0).



Immunofluorescent analysis of (-20°C Ethanol) fixed HeLa cells using PSMA4 antibody (68203-1-Ig, Clone: 2E6E4 ) at dilution of 1:400 and CoraLite®488-Conjugated Goat Anti-Mouse IgG(H+L).