

For Research Use Only

# NCAM2 Monoclonal antibody

Catalog Number: 68205-1-Ig



## Basic Information

Catalog Number:

68205-1-Ig

Size:

150ul, Concentration: 1000 ug/ml by Nanodrop;

Source:

Mouse

Isotype:

IgG2b

Immunogen Catalog Number:

AG4935

GenBank Accession Number:

BC052946

GeneID (NCBI):

4685

UNIPROT ID:

O15394

Full Name:

neural cell adhesion molecule 2

Calculated MW:

93 kDa

Observed MW:

93 kDa, 125 kDa

Purification Method:

Protein A purification

CloneNo.:

1D6C12

Recommended Dilutions:

WB 1:5000-1:50000

IF-P 1:50-1:500

## Applications

Tested Applications:

WB, IF-P, ELISA

Species Specificity:

Human, Rabbit, Mouse, Rat

Positive Controls:

WB : rabbit brain tissue, LNCaP cells, rat brain tissue, mouse brain tissue, rat cerebellum tissue, mouse cerebellum tissue

IF-P : mouse brain tissue,

## Storage

Storage:

Store at -20°C. Stable for one year after shipment.

Storage Buffer:

PBS with 0.02% sodium azide and 50% glycerol pH 7.3.

Aliquoting is unnecessary for -20°C storage

\*\*\* 20ul sizes contain 0.1% BSA

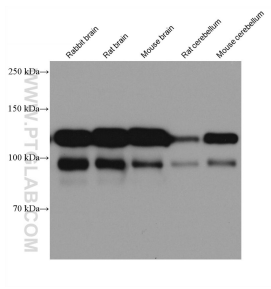
For technical support and original validation data for this product please contact:

T: 1 (888) 4PTGLAB (1-888-478-4522) (toll free in USA), or 1(312) 455-8498 (outside USA)

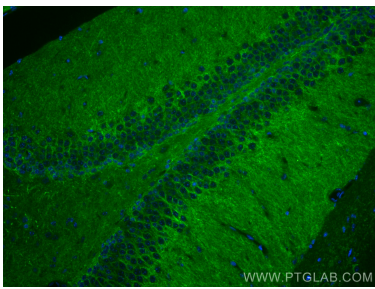
E: [proteintech@ptglab.com](mailto:proteintech@ptglab.com)  
W: [ptglab.com](http://ptglab.com)

This product is exclusively available under Proteintech Group brand and is not available to purchase from any other manufacturer.

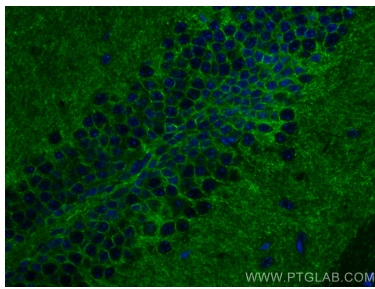
## Selected Validation Data



Various lysates were subjected to SDS PAGE followed by western blot with 68205-1-Ig (NCAM2 antibody) at dilution of 1:10000 incubated at room temperature for 1.5 hours.



Immunofluorescent analysis of (4% PFA) fixed mouse brain tissue using NCAM2 antibody (68205-1-Ig, Clone: 1D6C12 ) at dilution of 1:200 and CoraLite®488-Conjugated AffiniPure Goat Anti-Mouse IgG(H+L).



Immunofluorescent analysis of (4% PFA) fixed mouse brain tissue using NCAM2 antibody (68205-1-Ig, Clone: 1D6C12 ) at dilution of 1:200 and CoraLite®488-Conjugated AffiniPure Goat Anti-Mouse IgG(H+L).