

For Research Use Only

SIRP beta 1/CD172b Monoclonal antibody

Catalog Number: 68206-1-Ig



Basic Information

Catalog Number: 68206-1-Ig	GenBank Accession Number: BC025286	Purification Method: Protein G purification
Size: 150ul , Concentration: 1000 ug/ml by Nanodrop;	GeneID (NCBI): 10326	CloneNo.: 3A3H1
Source: Mouse	UNIPROT ID: O00241	Recommended Dilutions: WB 1:5000-1:50000 IHC 1:1000-1:4000 IF/ICC 1:500-1:2000
Isotype: IgG1	Full Name: signal-regulatory protein beta 1	
Immunogen Catalog Number: AG28615	Calculated MW: 43 kDa	
	Observed MW: 43 kDa	

Applications

Tested Applications:
WB, IHC, IF/ICC, ELISA

Species Specificity:
human, mouse, rat, pig, rabbit

Note-IHC: suggested antigen retrieval with **TE buffer pH 9.0; (*) Alternatively, antigen retrieval may be performed with citrate buffer pH 6.0**

Positive Controls:

WB : rat cerebellum tissue, rabbit cerebellum tissue, pig cerebellum tissue, mouse brain tissue, rat brain tissue, rabbit brain tissue, pig brain tissue, U-937 cells

IHC : human lung cancer tissue,

IF/ICC : OS-RC-2 cells,

Background Information

SIRP Beta 1 is a member of the signal-regulatory-protein (SIRP) family and also belongs to the immunoglobulin superfamily. SIRP family members are cell surface signaling receptors differentially expressed in leukocytes and the central nervous system. SIRP Beta 1 interacts with TYROBP/DAP12, a protein-bearing immunoreceptor tyrosine-based activation motif. SIRP Beta 1 also participates in the recruitment of tyrosine kinase SYK.

Storage

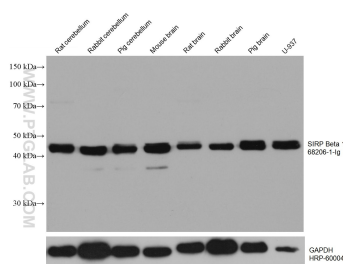
Storage:
Store at -20°C. Stable for one year after shipment.
Storage Buffer:
PBS with 0.02% sodium azide and 50% glycerol pH 7.3.
Aliquoting is unnecessary for -20°C storage

*** 20ul sizes contain 0.1% BSA

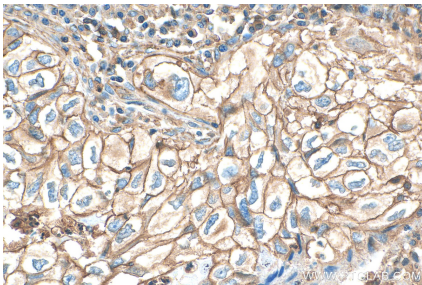
For technical support and original validation data for this product please contact:
T: 1 (888) 4PTGLAB (1-888-478-4522) (toll free in USA), or 1(312) 455-8498 (outside USA)
E: proteintech@ptglab.com
W: ptglab.com

This product is exclusively available under Proteintech Group brand and is not available to purchase from any other manufacturer.

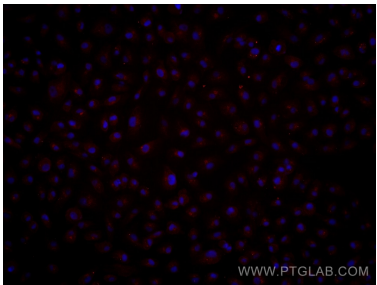
Selected Validation Data



Various lysates were subjected to SDS PAGE followed by western blot with 68206-1-Ig (SIRP Beta 1 antibody) at dilution of 1:20000 incubated at room temperature for 1.5 hours. The membrane was stripped and reblotted with HRP-conjugated GAPDH Monoclonal antibody (HRP-60004) as loading control.



Immunohistochemical analysis of paraffin-embedded human lung cancer tissue slide using 68206-1-Ig (SIRP Beta 1 antibody) at dilution of 1:2000 (under 40x lens). Heat mediated antigen retrieval with Tris-EDTA buffer (pH 9.0).



Immunofluorescent analysis of (4% PFA) fixed OS-RC-2 cells using SIRP Beta 1 antibody (68206-1-Ig, Clone: 3A3H1) at dilution of 1:1000 and Multi-rAb CoraLite® Plus 594-Goat Anti-Mouse Recombinant Secondary Antibody (H+L) (Cat.NO. RGAM004).