

For Research Use Only

NOTCH2/NOTCH2NL Monoclonal antibody



Catalog Number: 68212-1-Ig

Basic Information

Catalog Number: 68212-1-Ig	GenBank Accession Number: BC019835	Purification Method: Protein G purification
Size: 150ul , Concentration: 1000 µg/ml by Nanodrop;	GeneID (NCBI): 388677	CloneNo.: 2D5E1
Source: Mouse	Full Name: Notch homolog 2 (Drosophila) N-terminal like	Recommended Dilutions: WB 1:5000-1:50000 IF 1:400-1:1600
Isotype: IgG1	Calculated MW: 265 kDa	
Immunogen Catalog Number: AG1679	Observed MW: 250-265 kDa	

Applications

Tested Applications: IF, WB, ELISA	Positive Controls: WB : hTERT-RPE1 cells, U-87 MG cells
Species Specificity: Human	IF : HeLa cells,

Background Information

Notch 2 is a member of the notch family. Members of this Type 1 transmembrane protein family share structural characteristics including an extracellular domain consisting of multiple epidermal growth factor-like (EGF) repeats, and an intracellular domain consisting of multiple, different domain types. Notch family members play a role in a variety of developmental processes by controlling cell fate decisions. Notch2, like other Notch genes, functions in development of various tissues. This antibody can recognize NOTCH2 and NOTCH2NL. The antibody detects the full-length NOTCH2 protein about 250-265 kDa.

Storage

Storage:
Store at -20°C. Stable for one year after shipment.
Storage Buffer:
PBS with 0.02% sodium azide and 50% glycerol pH 7.3.
Aliquoting is unnecessary for -20°C storage

*** 20ul sizes contain 0.1% BSA

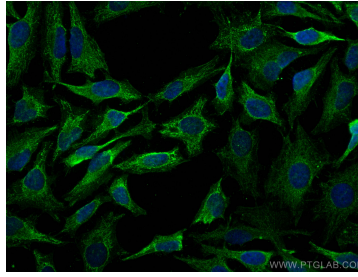
For technical support and original validation data for this product please contact:
T: 1 (888) 4PTGLAB (1-888-478-4522) (toll free in USA), or 1(312) 455-8498 (outside USA)
E: proteintech@ptglab.com
W: ptglab.com

This product is exclusively available under Proteintech Group brand and is not available to purchase from any other manufacturer.

Selected Validation Data



hTERT-RPE1 cells were subjected to SDS PAGE followed by western blot with 68212-1-Ig (NOTCH2 antibody) at dilution of 1:10000 incubated at room temperature for 1.5 hours.



Immunofluorescent analysis of (4% PFA) fixed HeLa cells using NOTCH2/NOTCH2NL antibody (68212-1-Ig, Clone: 2D5E1) at dilution of 1:800 and CoraLite® 488-Conjugated AffiniPure Goat Anti-Mouse IgG(H+L).