

For Research Use Only

NF90/ILF3 Monoclonal antibody

Catalog Number: 68213-1-Ig



Basic Information

Catalog Number: 68213-1-Ig	GenBank Accession Number: BC064836	Purification Method: Protein G purification
Size: 150ul , Concentration: 1000 µg/ml by Nanodrop;	GeneID (NCBI): 3609	CloneNo.: 2H10G3
Source: Mouse	Full Name: interleukin enhancer binding factor 3, 90kDa	Recommended Dilutions: WB 1:5000-1:50000 IHC 1:1000-1:4000
Isotype: IgG1	Calculated MW: 894 aa, 95 kDa	
Immunogen Catalog Number: AG30868	Observed MW: 90 kDa, 110 kDa	

Applications

Tested Applications:

IHC, WB, ELISA

Species Specificity:

Human, mouse, rat

Note-IHC: suggested antigen retrieval with TE buffer pH 9.0; (*) Alternatively, antigen retrieval may be performed with citrate buffer pH 6.0

Positive Controls:

WB: A431 cells, HSC-T6 cells, LNCaP cells, HeLa cells, HEK-293 cells, Jurkat cells, K-562 cells, NIH/3T3 cells, 4T1 cells

IHC: mouse eye tissue,

Background Information

Storage

Storage:

Store at -20°C. Stable for one year after shipment.

Storage Buffer:

PBS with 0.02% sodium azide and 50% glycerol pH 7.3.

Aliquoting is unnecessary for -20°C storage

*** 20ul sizes contain 0.1% BSA

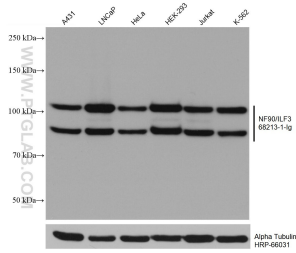
For technical support and original validation data for this product please contact:

T: 1 (888) 4PTGLAB (1-888-478-4522) (toll free in USA), or 1(312) 455-8498 (outside USA)

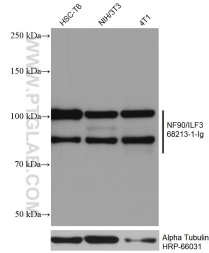
E: proteintech@ptglab.com
W: ptglab.com

This product is exclusively available under Proteintech Group brand and is not available to purchase from any other manufacturer.

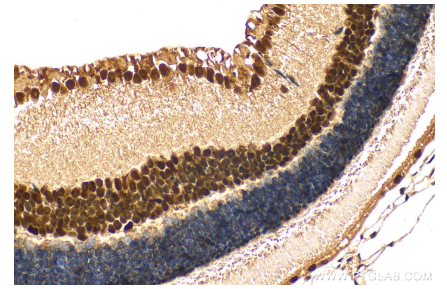
Selected Validation Data



A431 cells were subjected to SDS PAGE followed by western blot with 68213-1-Ig (NF90/ILF3 antibody) at dilution of 1:20000 incubated at room temperature for 1.5 hours. The membrane was stripped and reblotted with HRP-conjugated Alpha Tubulin Monoclonal antibody (HRP-66031) as loading control.



Various lysates were subjected to SDS PAGE followed by western blot with 68213-1-Ig (NF90/ILF3 antibody) at dilution of 1:20000 incubated at room temperature for 1.5 hours. The membrane was stripped and reblotted with HRP-conjugated Alpha Tubulin Monoclonal antibody (HRP-66031) as loading control.



Immunohistochemical analysis of paraffin-embedded mouse eye tissue slide using 68213-1-Ig (NF90/ILF3 antibody) at dilution of 1:2000 (under 40x lens). Heat mediated antigen retrieval with Tris-EDTA buffer (pH 9.0).