

For Research Use Only

# CCT2 Monoclonal antibody

Catalog Number: 68214-1-Ig 1 Publications



## Basic Information

Catalog Number: 68214-1-Ig	GenBank Accession Number: BC113516	Purification Method: Protein A purification
Size: 150ul , Concentration: 1000 ug/ml by Nanodrop;	GeneID (NCBI): 10576	CloneNo.: 2H6C7
Source: Mouse	UNIPROT ID: P78371	Recommended Dilutions: WB 1:5000-1:50000 IF/ICC 1:200-1:800
Isotype: IgG1	Full Name: chaperonin containing TCP1, subunit 2 (beta)	
Immunogen Catalog Number: AG19264	Calculated MW: 535 aa, 57 kDa	
	Observed MW: 50-58 kDa	

## Applications

Tested Applications: WB, IF/ICC, ELISA	Positive Controls:
Cited Applications: WB	WB : LNCaP cells, HeLa cells, HEK-293 cells, Jurkat cells, K-562 cells, pig brain tissue, rabbit brain tissue, rat brain tissue, mouse brain tissue
Species Specificity: Human, Mouse, Pig, Rabbit, Rat	IF/ICC : NIH/3T3 cells,
Cited Species: mouse	

## Background Information

CCT2 is a gene encoding a molecular chaperone that is a member of the chaperonin-containing TCP1 complex (CCT), also known as the TCP1 ring complex (TRiC). The switch of CCT2's role from a chaperonin to a specific aggregophagy receptor is achieved by CCT2 monomer formation. CCT2 functions independently of ubiquitin and the TRiC complex to facilitate the autophagic clearance of solid protein aggregates. CCT2 has 2 isoforms with a molecular mass of 53 and 57 kDa. (PMID: 35699934)

## Notable Publications

Author	Pubmed ID	Journal	Application
Joshua Linnert	37427378	Front Cell Dev Biol	WB

## Storage

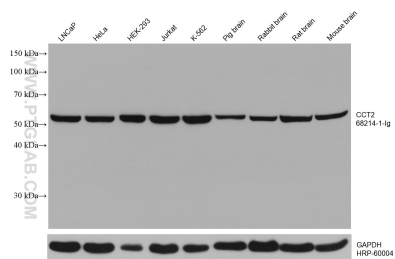
Storage:  
Store at -20°C. Stable for one year after shipment.  
Storage Buffer:  
PBS with 0.02% sodium azide and 50% glycerol pH 7.3.  
Aliquoting is unnecessary for -20°C storage

\*\*\* 20ul sizes contain 0.1% BSA

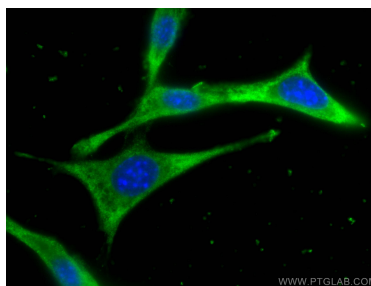
For technical support and original validation data for this product please contact:  
T: 1 (888) 4PTGLAB (1-888-478-4522) (toll free in USA), or 1(312) 455-8498 (outside USA)  
E: proteintech@ptglab.com  
W: ptglab.com

This product is exclusively available under Proteintech Group brand and is not available to purchase from any other manufacturer.

## Selected Validation Data



Various lysates were subjected to SDS PAGE followed by western blot with 68214-1-Ig (CCT2 antibody) at dilution of 1:20000 incubated at room temperature for 1.5 hours. The membrane was stripped and reblotted with HRP-conjugated GAPDH Monoclonal antibody (HRP-60004) as loading control.



Immunofluorescent analysis of (-20°C Ethanol) fixed NIH/3T3 cells using CCT2 antibody (68214-1-Ig, Clone: 2H6C7) at dilution of 1:400 and CoraLite®488-Conjugated Goat Anti-Mouse IgG(H+L).