

For Research Use Only

CD163 Monoclonal antibody

Catalog Number: 68218-1-Ig



Basic Information

Catalog Number: 68218-1-Ig	GenBank Accession Number: BC051281	Purification Method: Protein G purification
Size: 150ul , Concentration: 1000 µg/ml by Nanodrop;	GeneID (NCBI): 9332	CloneNo.: 2G7A5
Source: Mouse	Full Name: CD163 molecule	Recommended Dilutions: WB 1:5000-1:50000 IHC 1:2500-1:10000 IF 1:200-1:800
Isotype: IgG1	Calculated MW: 1156 aa, 125 kDa	
Immunogen Catalog Number: AG26721	Observed MW: 145 kDa	

Applications

Tested Applications:

IF, IHC, WB, ELISA

Species Specificity:

Human

Note-IHC: suggested antigen retrieval with TE buffer pH 9.0; (*) Alternatively, antigen retrieval may be performed with citrate buffer pH 6.0

Positive Controls:

WB: human placenta tissue,

IHC: human liver tissue, human placenta tissue, human tonsillitis tissue, human lung cancer tissue, human appendicitis tissue

IF: human liver tissue,

Background Information

CD163 is a transmembrane protein which belongs to the scavenger receptor cysteine-rich (SRCR) superfamily. This protein is a scavenger receptor for the hemoglobin-haptoglobin complex and is a marker for monocytes and macrophages. Soluble CD163 (sCD163), as a result of ectodomain shedding during inflammatory activation of macrophages, circulates in blood and has been suggested as a plasma/serum marker for macrophage activity.

Storage

Storage:

Store at -20°C. Stable for one year after shipment.

Storage Buffer:

PBS with 0.02% sodium azide and 50% glycerol pH 7.3.

Aliquoting is unnecessary for -20°C storage

*** 20ul sizes contain 0.1% BSA

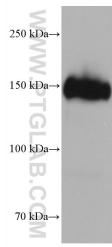
For technical support and original validation data for this product please contact:

T: 1 (888) 4PTGLAB (1-888-478-4522) (toll free in USA), or 1(312) 455-8498 (outside USA)

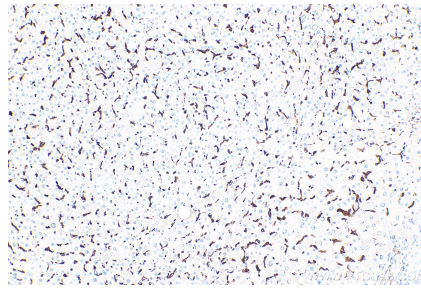
E: proteintech@ptglab.com
W: ptglab.com

This product is exclusively available under Proteintech Group brand and is not available to purchase from any other manufacturer.

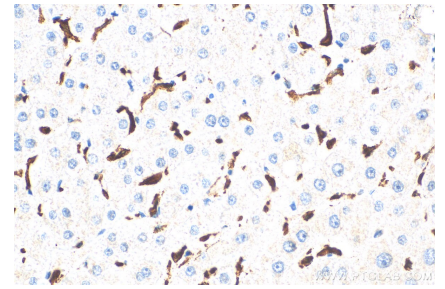
Selected Validation Data



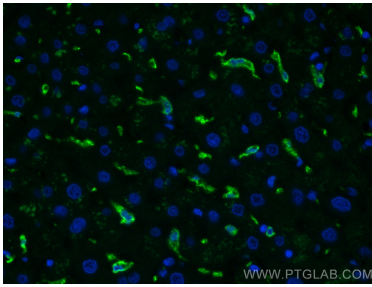
human placenta tissue were subjected to SDS PAGE followed by western blot with 68218-1-Ig (CD163 antibody) at dilution of 1:10000 incubated at room temperature for 1.5 hours.



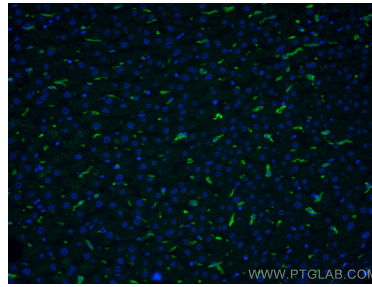
Immunohistochemical analysis of paraffin-embedded human liver tissue slide using 68218-1-Ig (CD163 antibody) at dilution of 1:5000 (under 10x lens). Heat mediated antigen retrieval with Tris-EDTA buffer (pH 9.0).



Immunohistochemical analysis of paraffin-embedded human liver tissue slide using 68218-1-Ig (CD163 antibody) at dilution of 1:5000 (under 40x lens). Heat mediated antigen retrieval with Tris-EDTA buffer (pH 9.0).



Immunofluorescent analysis of (4% PFA) fixed human liver tissue using CD163 antibody (68218-1-Ig, Clone: 2G7A5) at dilution of 1:400 and CoraLite@488-Conjugated AffiniPure Goat Anti-Mouse IgG(H+L).



Immunofluorescent analysis of (4% PFA) fixed human liver tissue using CD163 antibody (68218-1-Ig, Clone: 2G7A5) at dilution of 1:400 and CoraLite@488-Conjugated AffiniPure Goat Anti-Mouse IgG(H+L).