

For Research Use Only

# RCL1 Monoclonal antibody

Catalog Number: 68221-1-Ig



## Basic Information

<b>Catalog Number:</b> 68221-1-Ig	<b>GenBank Accession Number:</b> BC001025	<b>Purification Method:</b> Protein G purification
<b>Size:</b> 150ul , Concentration: 1000 µg/ml by Nanodrop;	<b>GeneID (NCBI):</b> 10171	<b>CloneNo.:</b> 1D1B3
<b>Source:</b> Mouse	<b>Full Name:</b> RNA terminal phosphate cyclase-like 1	<b>Recommended Dilutions:</b> WB 1:5000-1:50000
<b>Isotype:</b> IgG1	<b>Calculated MW:</b> 41 kDa	
<b>Immunogen Catalog Number:</b> AG7058	<b>Observed MW:</b> 41 kDa	

## Applications

**Tested Applications:**  
WB, ELISA

**Species Specificity:**  
Human, Mouse, Rat

**Positive Controls:**

**WB :** MCF-7 cells, HeLa cells, HEK-293 cells, HepG2 cells, Jurkat cells, K-562 cells, HSC-T6 cells, NIH/3T3 cells

## Background Information

RNA 3'-terminal phosphate cyclase-like protein (RCL1) does not have cyclase activity. It plays a role in 40S-ribosomal-subunit biogenesis in the early pre-rRNA processing steps at sites A0, A1 and A2 that are required for proper maturation of the 18S RNA. RCL1 has two isoforms with the molecular weight of 41 kDa and 20 kDa.

## Storage

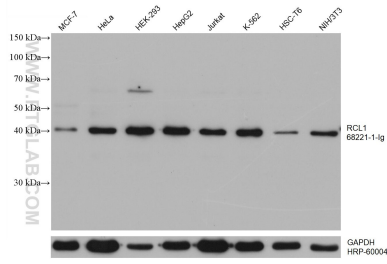
**Storage:**  
Store at -20°C. Stable for one year after shipment.  
**Storage Buffer:**  
PBS with 0.02% sodium azide and 50% glycerol pH 7.3.  
Aliquoting is unnecessary for -20°C storage

**\*\*\* 20ul sizes contain 0.1% BSA**

For technical support and original validation data for this product please contact:  
T: 1 (888) 4PTGLAB (1-888-478-4522) (toll free in USA), or 1(312) 455-8498 (outside USA)  
E: proteintech@ptglab.com  
W: ptglab.com

**This product is exclusively available under Proteintech Group brand and is not available to purchase from any other manufacturer.**

## Selected Validation Data



Various lysates were subjected to SDS PAGE followed by western blot with 68221-1-Ig (RCL1 antibody) at dilution of 1:20000 and incubated at room temperature for 1.5 hours. The membrane was stripped and reblotted with HRP-conjugated GAPDH Monoclonal antibody (HRP-60004) as loading control.