

For Research Use Only

CA12 Monoclonal antibody

Catalog Number: 68224-1-Ig



Basic Information

Catalog Number: 68224-1-Ig	GenBank Accession Number: BC000278	Purification Method: Protein G purification
Size: 150ul , Concentration: 1000 µg/ml by Nanodrop;	GeneID (NCBI): 771	CloneNo.: 3E1D8
Source: Mouse	UNIPROT ID: O43570	Recommended Dilutions: WB 1:5000-1:50000 IF 1:1000-1:4000
Isotype: IgG1	Full Name: carbonic anhydrase XII	
Immunogen Catalog Number: AG7235	Calculated MW: 39 kDa	
	Observed MW: 38-45 kDa	

Applications

Tested Applications: WB, IF, ELISA	Positive Controls:
Species Specificity: Human	WB : A549 cells, LNCaP cells, MCF-7 cells, HeLa cells IF : A549 cells,

Background Information

CA12 belongs to the alpha-carbonic anhydrase family. It reversible hydration of carbon dioxide. Overexpression of the zinc enzyme CA12 is observed in certain human cancers. The structure reveals a prototypical CA fold; however, two CA12 domains associate to form an isologous dimer, an observation that is confirmed by studies of the enzyme in solution.

Storage

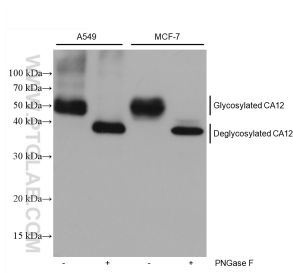
Storage:
Store at -20°C. Stable for one year after shipment.
Storage Buffer:
PBS with 0.02% sodium azide and 50% glycerol pH 7.3.
Aliquoting is unnecessary for -20°C storage

*** 20ul sizes contain 0.1% BSA

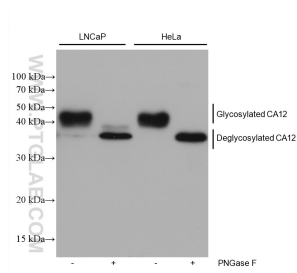
For technical support and original validation data for this product please contact:
T: 1 (888) 4PTGLAB (1-888-478-4522) (toll free in USA), or 1(312) 455-8498 (outside USA)
E: proteintech@ptglab.com
W: ptglab.com

This product is exclusively available under Proteintech Group brand and is not available to purchase from any other manufacturer.

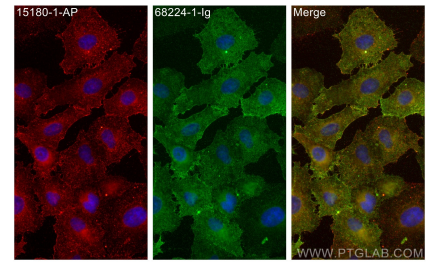
Selected Validation Data



Various lysates were subjected to SDS PAGE followed by western blot with 68224-1-Ig (CA12 antibody) at dilution of 1:10000 incubated at room temperature for 1.5 hours.



Various lysates were subjected to SDS PAGE followed by western blot with 68224-1-Ig (CA12 antibody) at dilution of 1:10000 incubated at room temperature for 1.5 hours.



Immunofluorescent analysis of (-20°C Methanol) fixed A549 cells using CA12 antibody (68224-1-Ig, Clone: 3E1D8) at dilution of 1:2000 and CoraLite®488-Conjugated AffiniPure Goat Anti-Mouse IgG(H+L).