

For Research Use Only

# calcyphosine Monoclonal antibody

Catalog Number: 68225-1-Ig



## Basic Information

<b>Catalog Number:</b> 68225-1-Ig	<b>GenBank Accession Number:</b> BC080599	<b>Purification Method:</b> Protein G purification
<b>Size:</b> 150ul , Concentration: 1000 µg/ml by Nanodrop;	<b>GeneID (NCBI):</b> 828	<b>CloneNo.:</b> 2B7D1
<b>Source:</b> Mouse	<b>Full Name:</b> calcyphosine	<b>Recommended Dilutions:</b> WB 1:2000-1:10000
<b>Isotype:</b> IgG1	<b>Calculated MW:</b> 189 aa, 21 kDa	
<b>Immunogen Catalog Number:</b> AG10330	<b>Observed MW:</b> 21 kDa	

## Applications

**Tested Applications:**  
WB, ELISA

**Species Specificity:**  
Human, pig, rabbit

**Positive Controls:**

WB : SK-BR-3 cells, pig lung tissue, rabbit lung tissue, U-251 cells, PC-3 cells

## Background Information

calcyphosine is a calcium-binding protein, which may play a role in the regulation of ion transport. Calcyphosine (CAPS) was initially identified in the canine thyroid but has also been detected in humans and other mammals. CAPS synthesis is increased by thyroid-stimulating hormone and cAMP analogs that promote cell proliferation and maintain cell differentiation. Recently, CAPS was found to be involved in many kinds of tumor.

## Storage

**Storage:**  
Store at -20°C. Stable for one year after shipment.

**Storage Buffer:**  
PBS with 0.02% sodium azide and 50% glycerol pH 7.3.

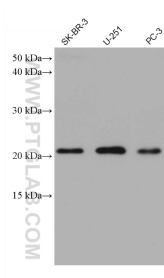
Aliquoting is unnecessary for -20°C storage

\*\*\* 20ul sizes contain 0.1% BSA

For technical support and original validation data for this product please contact:  
T: 1 (888) 4PTGLAB (1-888-478-4522) (toll free in USA), or 1(312) 455-8498 (outside USA) E: proteintech@ptglab.com W: ptglab.com

This product is exclusively available under Proteintech Group brand and is not available to purchase from any other manufacturer.

## Selected Validation Data



Various lysates were subjected to SDS PAGE followed by western blot with 68225-1-Ig (CAPS antibody) at dilution of 1:5000 incubated at room temperature for 1.5 hours.