

For Research Use Only

TTC30A Monoclonal antibody

Catalog Number: 68232-1-Ig



Basic Information

| | | |
|--|---|---|
| Catalog Number: 68232-1-Ig | GenBank Accession Number: BC042848 | Purification Method: Protein A purification |
| Size: 150ul , Concentration: 1000 µg/ml by Nanodrop; | GeneID (NCBI): 92104 | CloneNo.: 1A11B3 |
| Source: Mouse | Full Name: tetra(ri)copeptide repeat domain 30A | Recommended Dilutions: WB 1:5000-1:50000 IF 1:400-1:1600 |
| Isotype: IgG2b | Calculated MW: 665 aa, 76 kDa | |
| Immunogen Catalog Number: AG18361 | Observed MW: 72-76 kDa | |

Applications

Tested Applications:

IF, WB, ELISA

Species Specificity:

Human, Mouse, Rat

Positive Controls:

WB : LNCaP cells, rat testis tissue, HeLa cells, HEK-293 cells, mouse testis tissue

IF : hTERT-RPE1 cells,

Background Information

Tetra(ri)copeptide repeat protein 30A (TTC30A) as a component of ciliary segmentation, may be essential for cartilage differentiation and renal tubulogenesis (PMID: 34548398). It is required for polyglutamylation of axonemal tubulin and plays a role in anterograde intraflagellar transport (IFT), the process by which cilia precursors are transported from the base of the cilium to the site of their incorporation at the tip.

Storage

Storage:

Store at -20°C. Stable for one year after shipment.

Storage Buffer:

PBS with 0.02% sodium azide and 50% glycerol pH 7.3.

Aliquoting is unnecessary for -20°C storage

*** 20ul sizes contain 0.1% BSA

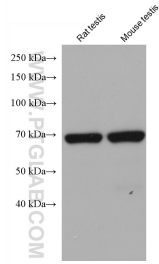
For technical support and original validation data for this product please contact:

T: 1 (888) 4PTGLAB (1-888-478-4522) (toll free in USA), or 1(312) 455-8498 (outside USA)

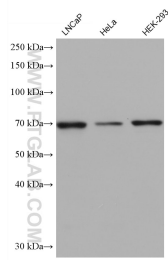
E: proteintech@ptglab.com
W: ptglab.com

This product is exclusively available under Proteintech Group brand and is not available to purchase from any other manufacturer.

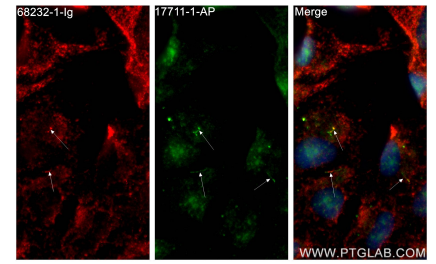
Selected Validation Data



Various lysates were subjected to SDS PAGE followed by western blot with 68232-1-Ig (TTC30A antibody) at dilution of 1:10000 incubated at room temperature for 1.5 hours.



Various lysates were subjected to SDS PAGE followed by western blot with 68232-1-Ig (TTC30A antibody) at dilution of 1:10000 incubated at room temperature for 1.5 hours.



Immunofluorescent analysis of (4% PFA) fixed hTERT-RPE1 cells using TTC30A antibody (68232-1-Ig, Clone: 1A11B3) at dilution of 1:800 and CoraLite® 594-Conjugated AffiniPure Goat Anti-Mouse IgG(H+L), ARL13B antibody (17711-1-AP, green).