

For Research Use Only

TTC30A Monoclonal antibody, PBS Only



Catalog Number: 68232-1-PBS

Basic Information

Catalog Number: 68232-1-PBS	GenBank Accession Number: BC042848	Purification Method: Protein A purification
Size: 100ug , Concentration: 1 mg/ml by Nanodrop;	GeneID (NCBI): 92104	CloneNo.: 1A11B3
Source: Mouse	UNIPROT ID: Q86WT1	
Isotype: IgG2b	Full Name: tetratricopeptide repeat domain 30A	
Immunogen Catalog Number: AG18361	Calculated MW: 665 aa, 76 kDa	
	Observed MW: 72-76 kDa	

Applications

Tested Applications:
WB, IF, Indirect ELISA

Species Specificity:
Human, Mouse, Rat

Background Information

Tetratricopeptide repeat protein 30A (TTC30A) as a component of ciliary segmentation, may be essential for cartilage differentiation and renal tubulogenesis (PMID: 34548398). It is required for polyglutamylation of axonemal tubulin and plays a role in anterograde intraflagellar transport (IFT), the process by which cilia precursors are transported from the base of the cilium to the site of their incorporation at the tip.

Storage

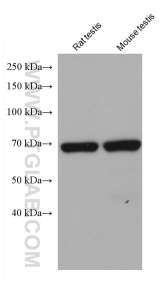
Storage:
Store at -80°C.

Storage Buffer:
PBS Only

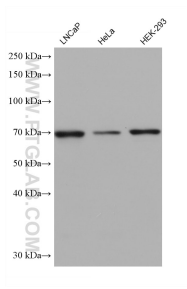
For technical support and original validation data for this product please contact:
T: 1 (888) 4PTGLAB (1-888-478-4522) (toll free in USA), or 1(312) 455-8498 (outside USA)
E: proteintech@ptglab.com
W: ptglab.com

This product is exclusively available under Proteintech Group brand and is not available to purchase from any other manufacturer.

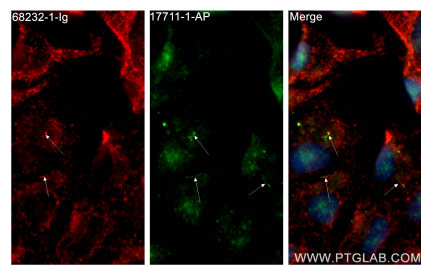
Selected Validation Data



Various lysates were subjected to SDS PAGE followed by western blot with 68232-1-Ig (TTC30A antibody) at dilution of 1:10000 incubated at room temperature for 1.5 hours. This data was developed using the same antibody clone with 68232-1-PBS in a different storage buffer formulation.



Various lysates were subjected to SDS PAGE followed by western blot with 68232-1-Ig (TTC30A antibody) at dilution of 1:10000 incubated at room temperature for 1.5 hours. This data was developed using the same antibody clone with 68232-1-PBS in a different storage buffer formulation.



Immunofluorescent analysis of (4% PFA) fixed hTERT-RPE1 cells using TTC30A antibody (68232-1-Ig, Clone: 1A11B3) at dilution of 1:800 and CoraLite®594-Conjugated AffiniPure Goat Anti-Mouse IgG(H+L), ARL13B antibody (17711-1-AP, green). This data was developed using the same antibody clone with 68232-1-PBS in a different storage buffer formulation.