

For Research Use Only

KIAA1429 Monoclonal antibody

Catalog Number: 68235-1-Ig



Basic Information

Catalog Number:

68235-1-Ig

Size:

150ul, Concentration: 500 ug/ml by Nanodrop;

Source:

Mouse

Isotype:

IgG1

Immunogen Catalog Number:

AG22449

GenBank Accession Number:

BC113380

GeneID (NCBI):

25962

UNIPROT ID:

Q69YN4

Full Name:

KIAA1429

Calculated MW:

1812 aa, 202 kDa

Observed MW:

200-210 kDa

Purification Method:

Protein G purification

CloneNo.:

3F1A4

Recommended Dilutions:

WB 1:5000-1:50000

Applications

Tested Applications:

WB, FC (Intra), ELISA

Species Specificity:

human, mouse

Positive Controls:

WB : LNCaP cells, NIH/3T3 cells, HeLa cells, HepG2 cells, HEK-293 cells, Jurkat cells, K-562 cells, 4T1 cells

Background Information

VIRMA (KIAA1429) is a key component of m6A methyltransferase (writer) complex that include METTL3, METTL14, WTAP, VIRMA, HAKAI, ZC3H13, and RBM15. VIRMA mediates methylation in the 3'UTR and around the stop codon, thus affecting alternative polyadenylation. VIRMA has been reported to act as oncogenic factor in breast cancer and liver cancer.

Storage

Storage:

Store at -20°C. Stable for one year after shipment.

Storage Buffer:

PBS with 0.02% sodium azide and 50% glycerol pH 7.3.

Aliquoting is unnecessary for -20°C storage

*** 20ul sizes contain 0.1% BSA

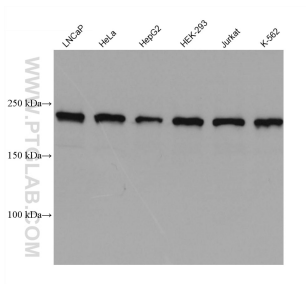
For technical support and original validation data for this product please contact:

T: 1 (888) 4PTGLAB (1-888-478-4522) (toll free in USA), or 1(312) 455-8498 (outside USA)

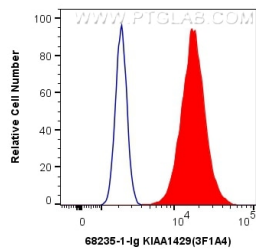
E: proteintech@ptglab.com
W: ptglab.com

This product is exclusively available under Proteintech Group brand and is not available to purchase from any other manufacturer.

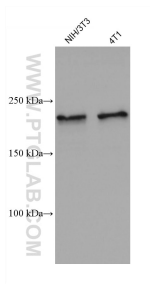
Selected Validation Data



Various lysates were subjected to SDS PAGE followed by western blot with 68235-1-Ig (KIAA1429 antibody) at dilution of 1:20000 incubated at room temperature for 1.5 hours.



1X10⁶ MCF-7 cells were intracellularly stained with 0.4 ug Anti-Human KIAA1429 (68235-1-Ig, Clone:3F1A4) and CoraLite®488-Conjugated AffiniPure Goat Anti-Mouse IgG(H+L) at dilution 1:1000 (red), or 0.4 ug Control Antibody. Cells were fixed with 4% PFA and permeabilized with Flow Cytometry Perm Buffer (PF00011-C).



Various lysates were subjected to SDS PAGE followed by western blot with 68235-1-Ig (KIAA1429 antibody) at dilution of 1:20000 incubated at room temperature for 1.5 hours.