

For Research Use Only

# ALDH2 Monoclonal antibody

Catalog Number: 68237-1-Ig

Featured Product

2 Publications



## Basic Information

Catalog Number:

68237-1-Ig

Size:

150ul, Concentration: 1000 ug/ml by 217

Nanodrop;

Source:

Mouse

Isotype:

IgG2a

Immunogen Catalog Number:

AG7463

GenBank Accession Number:

BC002967

GeneID (NCBI):

217

UNIPROT ID:

P05091

Full Name:

aldehyde dehydrogenase 2 family  
(mitochondrial)

Calculated MW:

56 kDa

Observed MW:

50-55 kDa

Purification Method:

Protein A purification

CloneNo.:

2G10F4

Recommended Dilutions:

WB 1:5000-1:50000

## Applications

Tested Applications:

WB, ELISA

Cited Applications:

WB

Species Specificity:

Human, Mouse, Rat, Rabbit, Pig

Cited Species:

mouse

Positive Controls:

WB: mouse liver tissue, rabbit liver tissue, rat liver tissue

## Background Information

Acetaldehyde dehydrogenase is the next enzyme after alcohol dehydrogenase in the major pathway of alcohol metabolism. It mediates NADP<sup>+</sup>-dependent oxidation of aldehydes into acids during detoxification of alcohol-derived acetaldehyde; lipid peroxidation; and metabolism of corticosteroids, biogenic amines and neurotransmitters. Genetic variation in ALDH2 is responsible for individual differences in responses to drinking alcohol. Thus, the absence of this enzyme is linked to alcohol intolerance and a reduced risk for alcoholism-related liver disease.

## Notable Publications

Author	Pubmed ID	Journal	Application
Meng-Yuan Liu	39468986	Mol Nutr Food Res	WB
Na Lu	38408533	Arch Biochem Biophys	WB

## Storage

Storage:

Store at -20°C. Stable for one year after shipment.

Storage Buffer:

PBS with 0.02% sodium azide and 50% glycerol pH 7.3.

Aliquoting is unnecessary for -20°C storage

\*\*\* 20ul sizes contain 0.1% BSA

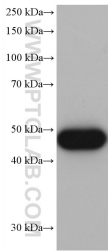
For technical support and original validation data for this product please contact:

T: 1 (888) 4PTGLAB (1-888-478-4522) (toll free in USA), or 1(312) 455-8498 (outside USA)

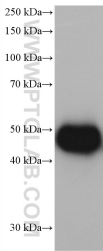
E: [proteintech@ptglab.com](mailto:proteintech@ptglab.com)  
W: [ptglab.com](http://ptglab.com)

This product is exclusively available under Proteintech Group brand and is not available to purchase from any other manufacturer.

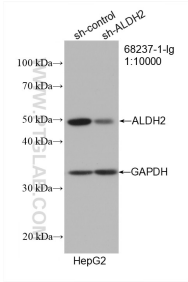
Selected Validation Data



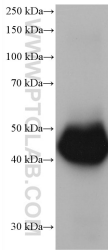
mouse liver tissue were subjected to SDS PAGE followed by western blot with 68237-1-Ig (ALDH2 antibody) at dilution of 1:20000 incubated at room temperature for 1.5 hours.



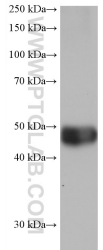
pig liver tissue were subjected to SDS PAGE followed by western blot with 68237-1-Ig (ALDH2 antibody) at dilution of 1:20000 incubated at room temperature for 1.5 hours.



WB result of ALDH2 antibody (68237-1-Ig; 1:10000; incubated at room temperature for 1.5 hours) with sh-Control and sh-ALDH2 transfected HepG2 cells.



rabbit liver tissue were subjected to SDS PAGE followed by western blot with 68237-1-Ig (ALDH2 antibody) at dilution of 1:20000 incubated at room temperature for 1.5 hours.



rat liver tissue were subjected to SDS PAGE followed by western blot with 68237-1-Ig (ALDH2 antibody) at dilution of 1:20000 incubated at room temperature for 1.5 hours.