

For Research Use Only

# PDHB Monoclonal antibody

Catalog Number: 68238-1-Ig



## Basic Information

<b>Catalog Number:</b> 68238-1-Ig	<b>GenBank Accession Number:</b> BC000439	<b>Purification Method:</b> Protein G purification
<b>Size:</b> 150ul , Concentration: 1000 µg/ml by Nanodrop;	<b>GeneID (NCBI):</b> 5162	<b>CloneNo.:</b> 2A7C10
<b>Source:</b> Mouse	<b>Full Name:</b> pyruvate dehydrogenase (lipoamide) beta	<b>Recommended Dilutions:</b> WB 1:5000-1:50000 IF 1:400-1:1600
<b>Isotype:</b> IgG1	<b>Calculated MW:</b> 39 kDa	
<b>Immunogen Catalog Number:</b> AG6857	<b>Observed MW:</b> 34 kDa	

## Applications

### Tested Applications:

IF, WB, ELISA

### Species Specificity:

Human, Mouse, Rat, Rabbit, Pig

### Positive Controls:

**WB :** HeLa cells, HepG2 cells, Jurkat cells, HSC-T6 cells, pig brain tissue, rabbit brain tissue, rat brain tissue, mouse brain tissue, mouse heart tissue

**IF :** HeLa cells,

## Background Information

PDHB (Pyruvate dehydrogenase E1 component subunit beta, mitochondrial) is also named PHE1B. The enzyme, which is found in mitochondria, is one of the component enzymes of the pyruvate dehydrogenase multienzyme complex (PDH). It catalyzes the first reaction of an oxidative decarboxylation sequence converting pyruvate to acetyl-CoA and CO<sub>2</sub> (PMID:3422424). Defects in PDHB are the cause of pyruvate dehydrogenase E1-beta deficiency (PDHBD) (PMID:15138885).

## Storage

### Storage:

Store at -20°C. Stable for one year after shipment.

### Storage Buffer:

PBS with 0.02% sodium azide and 50% glycerol pH 7.3.

Aliquoting is unnecessary for -20°C storage

**\*\*\* 20ul sizes contain 0.1% BSA**

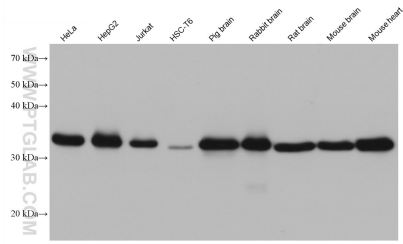
For technical support and original validation data for this product please contact:

T: 1 (888) 4PTGLAB (1-888-478-4522) (toll free in USA), or 1(312) 455-8498 (outside USA)

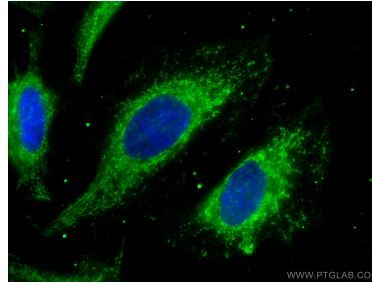
E: [proteintech@ptglab.com](mailto:proteintech@ptglab.com)  
W: [ptglab.com](http://ptglab.com)

**This product is exclusively available under Proteintech Group brand and is not available to purchase from any other manufacturer.**

## Selected Validation Data



Various lysates were subjected to SDS PAGE followed by western blot with 68238-1-Ig (PDHB antibody) at dilution of 1:10000 incubated at room temperature for 1.5 hours.



Immunofluorescent analysis of (-20°C Methanol) fixed HeLa cells using PDHB antibody (68238-1-Ig, Clone: 2A7C10) at dilution of 1:800 and CoraLite®488-Conjugated AffiniPure Goat Anti-Mouse IgG(H+L).