

PSMA2 Monoclonal antibody

Catalog Number: 68240-1-Ig

Basic Information

Catalog Number:	GenBank Accession Number:	Purification Method:
68240-1-Ig	BC047697	Protein G purification
Size:	GeneID (NCBI):	CloneNo.:
150ul, Concentration: 1000 ug/ml by Nanodrop;	5683	2H4A10
Source:	UNIPROT ID:	Recommended Dilutions:
Mouse	P25787	WB 1:1000-1:4000
Isotype:	Full Name:	IHC 1:50-1:500
IgG1	proteasome (prosome, macropain) subunit, alpha type, 2	
Immunogen Catalog Number:	Calculated MW:	
AG5837	26 kDa	
	Observed MW:	
	26 kDa	

Applications

Tested Applications:	Positive Controls:
WB, IHC, ELISA	
Species Specificity:	WB : U2OS cells, A431 cells, HEK-293 cells, HepG2 cells, HSC-T6 cells, NIH/3T3 cells, pig heart tissue, rat heart tissue, mouse heart tissue
Human, mouse, pig, rat	IHC : human cervical cancer tissue,
Note-IHC: suggested antigen retrieval with TE buffer pH 9.0; (*) Alternatively, antigen retrieval may be performed with citrate buffer pH 6.0	

Background Information

PSMA2 (Proteasome subunit alpha type-2) is the essential subunit that contributes to the complete assembly of 20S proteasome complex, involved in the proteolytic degradation of most intracellular proteins. It is required in spermatogenesis and generation of a subset of MHC class I-presented antigenic peptides (PMID: 34711951, PMID: 27342858). Dysregulation of PSMA2 degradation leads to tumorigenesis including cervical cancer (PMID:33684886).

Storage

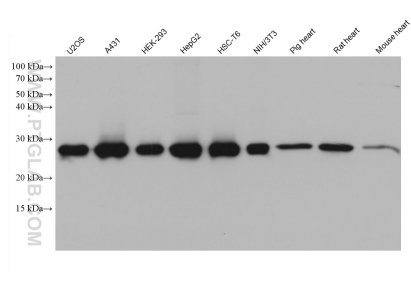
Storage:
Store at -20°C. Stable for one year after shipment.
Storage Buffer:
PBS with 0.02% sodium azide and 50% glycerol pH 7.3.
Aliquoting is unnecessary for -20°C storage

*** 20ul sizes contain 0.1% BSA

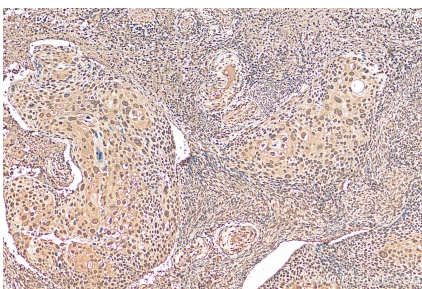
For technical support and original validation data for this product please contact:
T: 1 (888) 4PTGLAB (1-888-478-4522) (toll free in USA), or 1(312) 455-8498 (outside USA)
E: proteintech@ptglab.com
W: ptglab.com

This product is exclusively available under Proteintech Group brand and is not available to purchase from any other manufacturer.

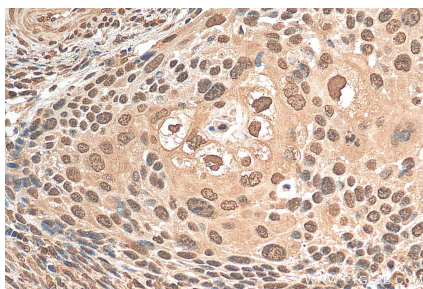
Selected Validation Data



Various lysates were subjected to SDS PAGE followed by western blot with 68240-1-Ig (PSMA2 antibody) at dilution of 1:2000 incubated at room temperature for 1.5 hours.



Immunohistochemical analysis of paraffin-embedded human cervical cancer tissue slide using 68240-1-Ig (PSMA2 antibody) at dilution of 1:200 (under 10x lens). Heat mediated antigen retrieval with Tris-EDTA buffer (pH 9.0).



Immunohistochemical analysis of paraffin-embedded human cervical cancer tissue slide using 68240-1-Ig (PSMA2 antibody) at dilution of 1:200 (under 40x lens). Heat mediated antigen retrieval with Tris-EDTA buffer (pH 9.0).