

For Research Use Only

GLO1 Monoclonal antibody

Catalog Number: 68242-1-Ig



Basic Information

Catalog Number:

68242-1-Ig

Size:

150ul, Concentration: 1000 ug/ml by Nanodrop;

Source:

Mouse

Isotype:

IgG2a

Immunogen Catalog Number:

AG7314

GenBank Accession Number:

BC001741

GeneID (NCBI):

2739

UNIPROT ID:

Q04760

Full Name:

glyoxalase I

Calculated MW:

21 kDa

Observed MW:

21-25 kDa

Purification Method:

Protein A purification

CloneNo.:

1B7A8

Recommended Dilutions:

WB 1:1000-1:6000

IF/ICC 1:200-1:800

Applications

Tested Applications:

WB, IF/ICC, FC (Intra), ELISA

Species Specificity:

human, mouse, rat

Positive Controls:

WB : HEK-293 cells, LNCaP cells, Jurkat cells, HepG2 cells, K-562 cells, HSC-T6 cells

IF/ICC : HeLa cells,

Background Information

Glo1 (glyoxalase I) is a cytosolic protein expressed in all mammalian cells. Its physiological function is the detoxification of MG (methylglyoxal), which is a potent precursor of AGEs (advanced glycation end-products). Glo1 is known to play a role in many diseases including diabetes mellitus, Alzheimer's disease, and cancer.

Storage

Storage:

Store at -20°C. Stable for one year after shipment.

Storage Buffer:

PBS with 0.02% sodium azide and 50% glycerol pH 7.3.

Aliquoting is unnecessary for -20°C storage

*** 20ul sizes contain 0.1% BSA

For technical support and original validation data for this product please contact:

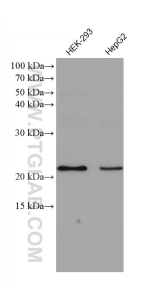
T: 1 (888) 4PTGLAB (1-888-478-4522) (toll free in USA), or 1(312) 455-8498 (outside USA)

E: proteintech@ptglab.com

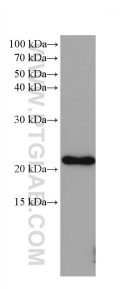
W: ptglab.com

This product is exclusively available under Proteintech Group brand and is not available to purchase from any other manufacturer.

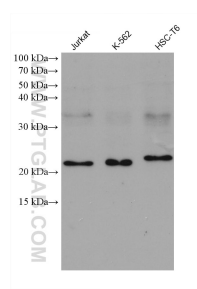
Selected Validation Data



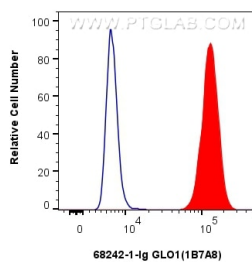
Various lysates were subjected to SDS PAGE followed by western blot with 68242-1-Ig (GLO1 antibody) at dilution of 1:3000 incubated at room temperature for 1.5 hours.



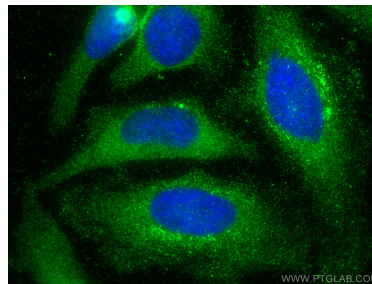
LNCaP cells were subjected to SDS PAGE followed by western blot with 68242-1-Ig (GLO1 antibody) at dilution of 1:3000 incubated at room temperature for 1.5 hours.



Various lysates were subjected to SDS PAGE followed by western blot with 68242-1-Ig (GLO1 antibody) at dilution of 1:3000 incubated at room temperature for 1.5 hours.



1×10^6 HeLa cells were intracellularly stained with 0.4 ug GLO1 Monoclonal antibody (68242-1-Ig, Clone:1B7A8) and CoraLite488-conjugated Donkey Anti-Mouse IgG(H+L)(SA00013-5)(red), or 0.4 ug Mouse IgG2a Isotype Control (C1.18.4) (65208-1-Ig, Clone: C1.18.4) (blue). Cells were fixed with 4% PFA and permeabilized with Flow Cytometry Perm Buffer (PF00011-C).



Immunofluorescent analysis of (-20°C Methanol) fixed HeLa cells using GLO1 antibody (68242-1-Ig, Clone: 1B7A8) at dilution of 1:400 and CoraLite® 488-Conjugated Goat Anti-Mouse IgG(H+L).