

For Research Use Only

KLK8 Monoclonal antibody

Catalog Number: 68247-1-Ig



Basic Information

Catalog Number: 68247-1-Ig	GenBank Accession Number: BC040887	Purification Method: Protein A purification
Size: 150ul , Concentration: 1000 ug/ml by Nanodrop;	GeneID (NCBI): 11202	CloneNo.: 2F3A8
Source: Mouse	UNIPROT ID: O60259	Recommended Dilutions: WB 1:5000-1:50000 IHC 1:250-1:1000 IF/ICC 1:400-1:1600
Isotype: IgG2a	Full Name: kallikrein-related peptidase 8	
Immunogen Catalog Number: AG5642	Calculated MW: 28 kDa	
	Observed MW: 28 kDa	

Applications

Tested Applications:
WB, IHC, IF/ICC, ELISA

Species Specificity:
human, mouse

Note-IHC: suggested antigen retrieval with **TE buffer pH 9.0; (*)** Alternatively, antigen retrieval may be performed with **citrate buffer pH 6.0**

Positive Controls:

WB : Jurkat cells, A431 cells, EC109 cells, MOLT-4 cells, NK-92 cells

IHC : human cervical cancer tissue, mouse brain tissue

IF/ICC : SH-SY5Y cells,

Background Information

KLK8(Kallikrein-8) is also named as NRPN, PRSS19, TADG14.It is a new member of the human kallikrein family, which is predicted to be secreted and expected to be present in biological fluids (PMID:12507964).The protein is detectable in ovarian cancer tissue extracts, serum, and ascites fluid, indicating that it may serve as a new ovarian cancer marker (PMID:12782581). KLK8 has one predicted glycosylation site (PMID:20940292) and it has some isoforms produced by alternative splicing.

Storage

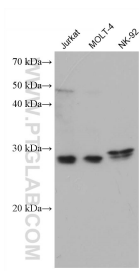
Storage:
Store at -20°C. Stable for one year after shipment.
Storage Buffer:
PBS with 0.02% sodium azide and 50% glycerol pH 7.3.
Aliquoting is unnecessary for -20°C storage

*** 20ul sizes contain 0.1% BSA

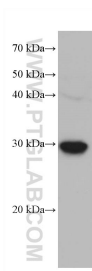
For technical support and original validation data for this product please contact:
T: 1 (888) 4PTGLAB (1-888-478-4522) (toll free in USA), or 1(312) 455-8498 (outside USA)
E: proteintech@ptglab.com
W: ptglab.com

This product is exclusively available under Proteintech Group brand and is not available to purchase from any other manufacturer.

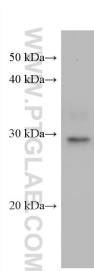
Selected Validation Data



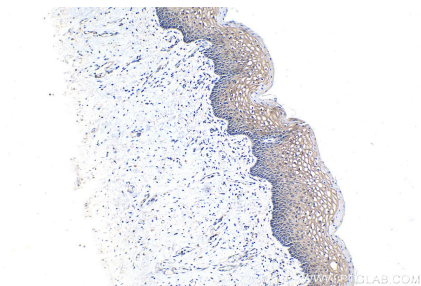
Various lysates were subjected to SDS PAGE followed by western blot with 68247-1-Ig (KLK8 antibody) at dilution of 1:10000 incubated at room temperature for 1.5 hours.



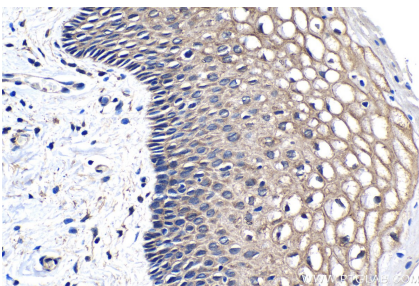
EC109 cells were subjected to SDS PAGE followed by western blot with 68247-1-Ig (KLK8 antibody) at dilution of 1:10000 incubated at room temperature for 1.5 hours.



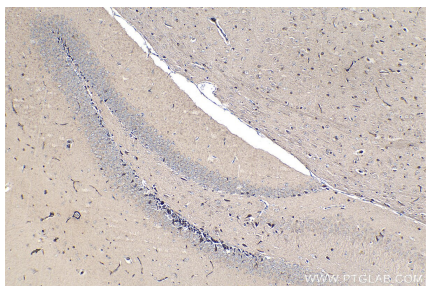
A431 cells were subjected to SDS PAGE followed by western blot with 68247-1-Ig (KLK8 antibody) at dilution of 1:10000 incubated at room temperature for 1.5 hours.



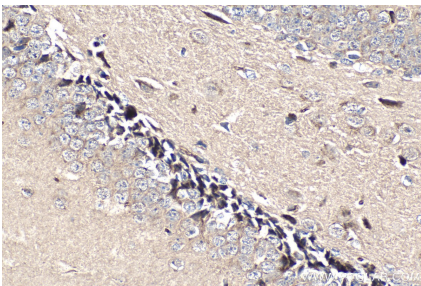
Immunohistochemical analysis of paraffin-embedded human cervical cancer tissue slide using 68247-1-Ig (KLK8 antibody) at dilution of 1:500 (under 10x lens). Heat mediated antigen retrieval with Tris-EDTA buffer (pH 9.0).



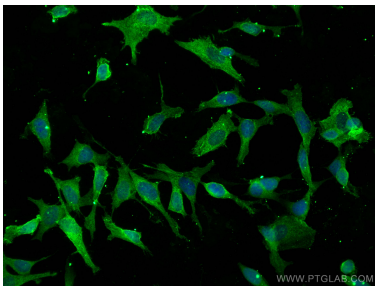
Immunohistochemical analysis of paraffin-embedded human cervical cancer tissue slide using 68247-1-Ig (KLK8 antibody) at dilution of 1:500 (under 40x lens). Heat mediated antigen retrieval with Tris-EDTA buffer (pH 9.0).



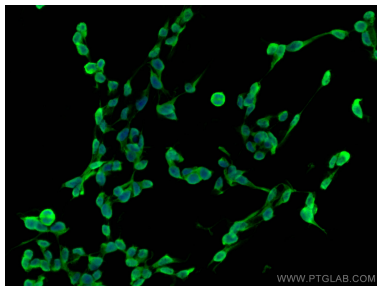
Immunohistochemical analysis of paraffin-embedded mouse brain tissue slide using 68247-1-Ig (KLK8 antibody) at dilution of 1:500 (under 10x lens). Heat mediated antigen retrieval with Tris-EDTA buffer (pH 9.0).



Immunohistochemical analysis of paraffin-embedded mouse brain tissue slide using 68247-1-Ig (KLK8 antibody) at dilution of 1:500 (under 40x lens). Heat mediated antigen retrieval with Tris-EDTA buffer (pH 9.0).



Immunofluorescent analysis of (4% PFA) fixed SH-SY5Y cells using KLK8 antibody (68247-1-Ig, Clone: 2F3A8) at dilution of 1:800 and CoraLite®488-Conjugated AffiniPure Goat Anti-Mouse IgG(H+L).



Immunofluorescent analysis of (4% PFA) fixed SH-SY5Y cells using KLK8 antibody (68247-1-Ig, Clone: 2F3A8) at dilution of 1:800 and CoraLite®488-Conjugated AffiniPure Goat Anti-Mouse IgG(H+L).